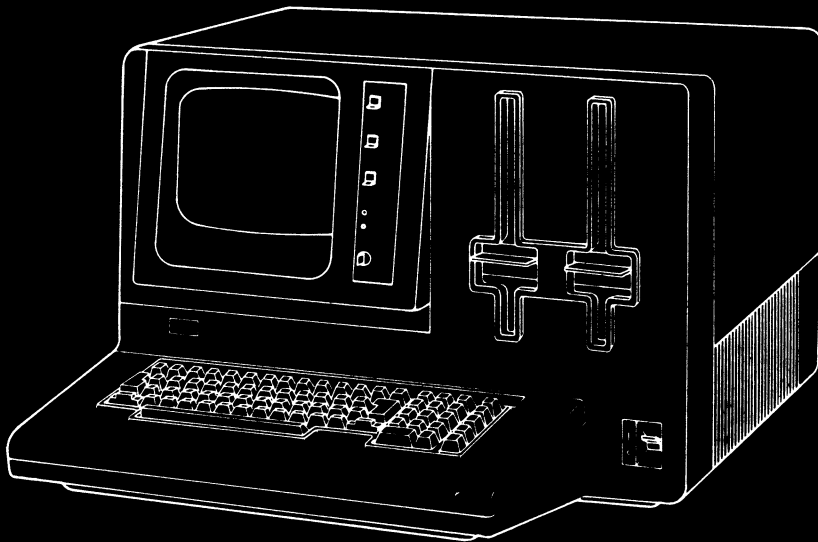


IBM

IBM 5110 Model 3
Computer
Parts Catalog

5120



*IBM 5110 Model 3
Computer
Parts Catalog*



**IBM 5110 Model 3
Computer
Parts Catalog**

5120

Parts Catalog

First Edition (December, 1979)

This publication is only for the purpose of ordering replaceable assemblies, subassemblies, and detail parts for the IBM 5110 Model 3.

This Parts Catalog (PC) contains listings and illustrations of all replaceable assemblies, subassemblies, and detail parts released on or before October 17, 1979, for the Series/1.

Changes that affect this catalog are made periodically; any such changes will be reported in subsequent revisions.

It is possible that this material may contain reference to, or information about IBM products (machines and programs), programming, or services which are not announced in your country. Such references or information must not be construed to mean that IBM intends to announce such IBM products, programming, or services in your country.

Requests for copies of IBM publications should be made to your IBM representative or the IBM branch office serving your locality.

This publication could contain technical inaccuracies or typographical errors. A form for readers' comments is provided at the back of this publication. If the form has been removed, send your comments to IBM Corporation, Systems Publications, Department 27T, P.O. Box 1328, Boca Raton, Florida 33432. IBM may use and distribute any of the information you supply in any way it believes appropriate without incurring any obligation whatever. You may, of course, continue to use the information you supply.

Copyright International Business Machines Corporation 1979.

HOW TO USE A PARTS CATALOG	vi
VISUAL INDEX	viii
CATALOG SECTION	1
Figure 1. Final Assembly, Sheet 1 of 2	2
Figure 1. Final Assembly, Sheet 2 of 2	4
Figure 2. Electro/Mechanical Sub Assembly, Sheet 1 of 3	6
Figure 2. Electro/Mechanical Sub Assembly, Sheet 2 of 3	8
Figure 2. Electro/Mechanical Sub Assembly, Sheet 3 of 3	10
Figure 3. Logic Box Assembly	12
Figure 4. Fan and Plenum Assembly	14
Figure 5. Keyboard Assembly	16
Figure 5A. Keybutton Chart	18
Figure 5B. Keybutton Chart, Katakana	19
Figure 5C. Keybutton Chart, WTC	20
Figure 6. Diskette Drive Final Assembly	22
Figure 7. Spindle, Carriage and Pulley Assembly	24
Figure 8. Diskette Guide and Clamping Assembly	26
Figure 9. Motor, Capacitor and Actuator Assembly	28
Figure 10. Cable and Jumper Component Parts	30
NUMERICAL INDEX	X-1

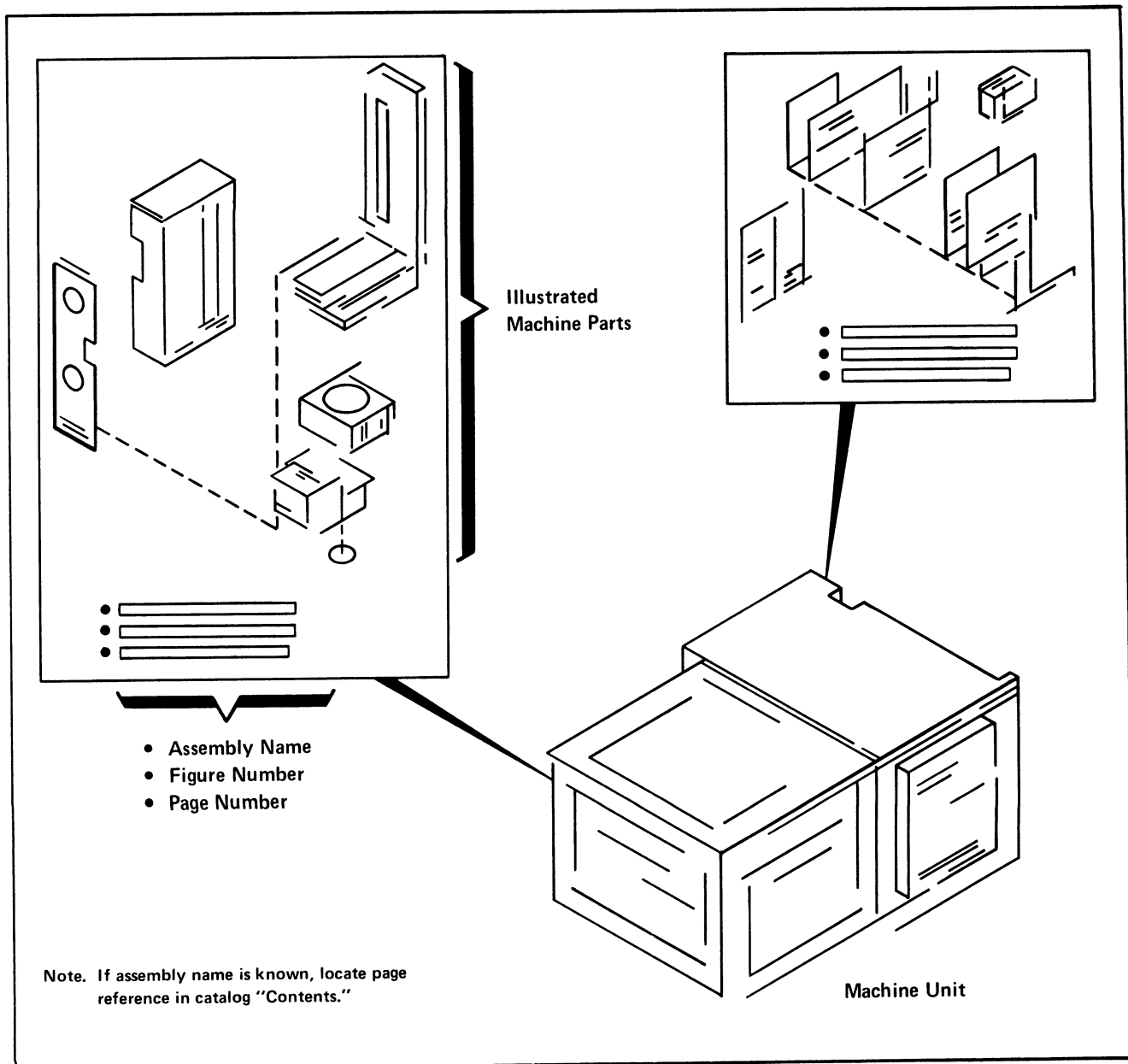
How to Use a Parts Catalog

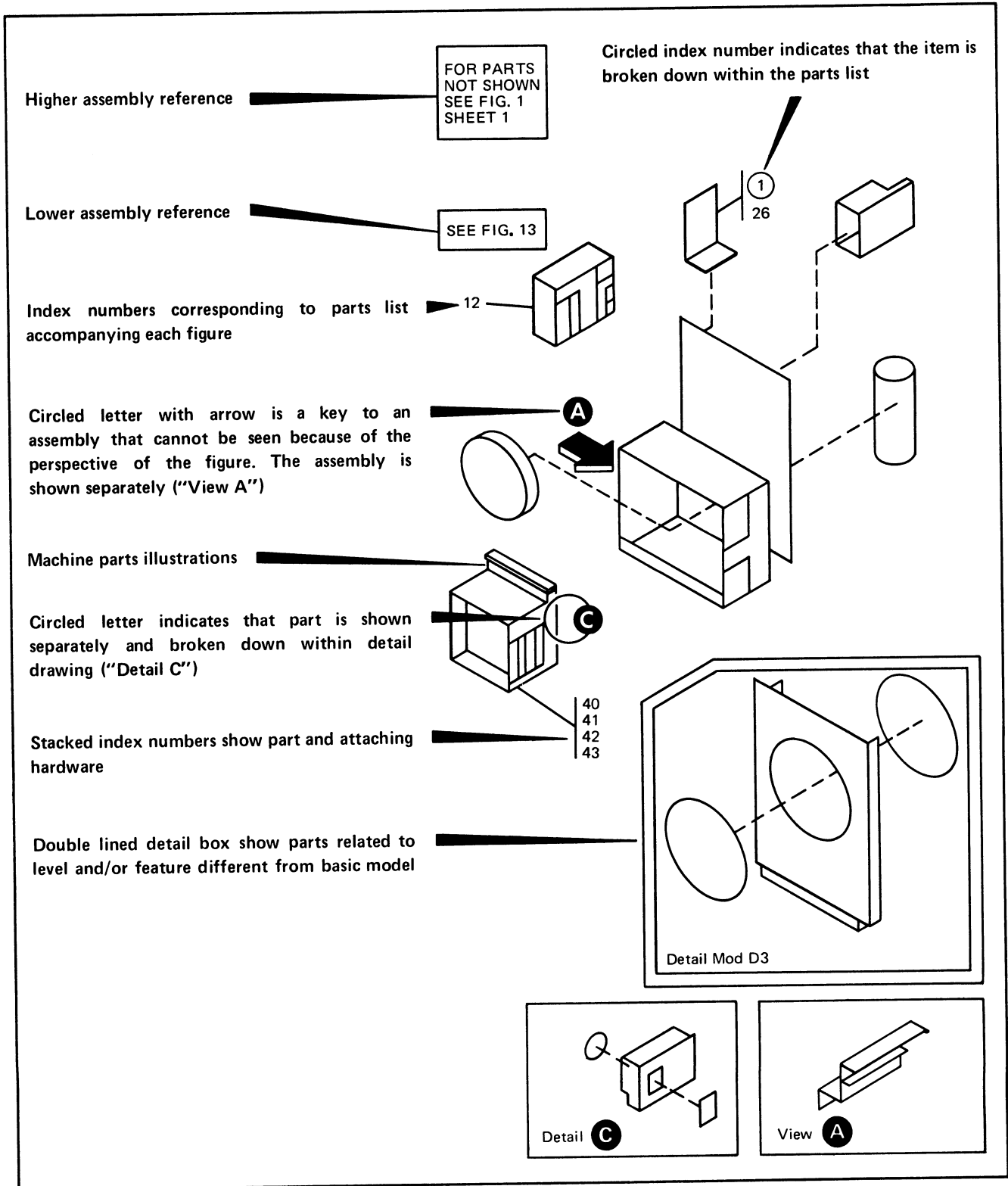
PARTS CATALOG STRUCTURE

To find parts quickly, you should have a general understanding of the three major sections of this catalog:

- 1** Visual Index (machine assembly illustrations and page locations within the Catalog Section)
- 2** Catalog Section (assembly illustrations with accompanying parts lists)
- 3** Numerical Index (parts listed in numerical order with cross-references to applicable figure numbers within the Catalog Section)

1 VISUAL INDEX This is a starting point for locating a part in the Catalog Section





POWER SUPPLY

FIGURE- INDEX NUMBER	PART NUMBER	UNITS PER ASM.	DESCRIPTION				
			1	2	3	4	
3 -	5892856	1	REF	POWER SUPPLY ASM,NO.1- 110V 50 AND 60 HZ			
-	5892858	1	REF	POWER SUPPLY ASM,NO.1- 208V 50 AND 60 HZ			
-	1553193	1	REF	POWER SUPPLY ASM,NO.1 AND 3- 60 HZ LV			
-	1553194	1	REF	POWER SUPPLY ASM,NO.1 AND 3- 60 HZ HV			
-	1553195 NP	1	REF	POWER SUPPLY ASM,NO.1 AND 3- 50 HZ LV			
-	1553196 NP	1	REF	POWER SUPPLY ASM,NO.1 AND 3- 50 HZ HV			
-	1631389	1	REF	PWR SPLY ASM,NO.1 AND 3-50 HZ LV-UK ONLY			
-	1631390	1	REF	PWR SPLY ASM,NO.1 AND 3-50 HZ HV-UK ONLY			
				FOR NEXT HIGHER ASM SEE LIST 2-21 AND 23			
				AND FOR ILLUSTRATION FIG. 3			
- 1	NO NO.	1		• LABEL			
- 2	845762	1		• LABEL			
- 3	5891299	1		• COVER			
- 4	"COMM"	4		• SCREW,MACH BIND HD 8-32 NC-2A X .250 LG			
- 5	1632336	1		• FUSE,7A-USED ON 208V POWER SUPPLY NO. 1			
				NO FUSE REQUIRED ON 110V POWER SUPPLY			
- 6	512137	1		• FUSE,5A-USED ON 110V POWER SUPPLY NO. 1			
- 6	1632336	1		• FUSE,7A-USED ON 208V POWER SUPPLY NO. 1			
- 7	5130278 NR	1		• LABEL-USED ON 208V POWER SUPPLY NO. 1			
- 8	5130277	1		• LABEL-USED ON 110V POWER SUPPLY NO. 1			
- 8	5130278	1		• LABEL-USED ON 208V POWER SUPPLY NO. 1			
- 9	1553738	1		• POWER INPUT ASM			
				FOR DETAIL BREAKDOWN SEE LIST 4			
- 10	58207	1	AR	• SCREW,MACH BIND HD 8-32 NC-2A X .250 LG			ATT PT
- 11	5130276	1		• BRACKET			
- 12	58207	3		• SCREW,MACH BIND HD 8-32 NC-2A X .250 LG			ATT PT
- 13	2546652	5		• TIE,CABLE			
- 14	2100264	2		• RELIEF, CABLE STRAIN			
- 15	55901	3		• WASHER,LOCK EXT T .176DIA			
- 16	58207	3		• SCREW,MACH BIND HD 8-32 NC-2A X .250 LG			

ITEM	MEANING
1 Similar Assemblies	Two assemblies having majority of identical parts are broken down on same list (common parts have same index number).
2 NP	Nonprocurable — parts not available separately; order next higher assembly.
3 Indenture	Shows the relationship of a part to its next higher assembly. For example: <i>Indenture</i> 1 2 3 4 MAIN ASSEMBLY • Detail parts of main assembly • Assembly within main assembly • • Detail part of one-dot assembly • • • Assembly within one-dot assembly • • • • Detail parts of two-dot assembly
4 NO NO.	No number — order detail parts separately.
5 "COMM"	Commercial hardware — order from commercial hardware source, not IBM.
6 NR	Not recommended — not recommended for field replacement; order next higher assembly.
7 REF	Reference — see complete assembly on a previous drawing for parts quantities.
8 ATT PT	Attaching parts — used to attach two-dot assembly to one-dot assembly. They are listed following part to be attached.
9 AR	As required — use quantity as required.

3 NUMERICAL INDEX

NUMERICAL INDEX

The numerical index follows the catalog section. Use it to locate a part when you know the part number only. The index lists part numbers in numerical order along with all applicable figures and parts lists.

Part numbers in numerical order

References to figure, parts list, and part index number

PART NO.	LIST AND INDEX NO.	PART NO.	LIST AND INDEX NO.	PART NO.	LIST AND INDEX NO.	PART NO.	LIST AND INDEX NO.
45J	6 - 77 6 - 83 6 - 93	6935-CONT	12 - 4 14 - 127 14 - 132 15 - 77 15 - 81 15 - 85 15A- 66 15A- 70	10170-CONT	8 - 18 9 - 41 9 - 84 10 - 42 11 - 2 11 - 9 13 - 11 14 - 18	25627	6 - 17 8 - 15 15 - 93 15A- 75 24 - 8
455	11 - 31					25891	2 - 49 2 - 101
845	1 - 69					26380	14 - 110
2032	7 - 8						
3550	1 - 28 1 - 55						

ORDERING PARTS

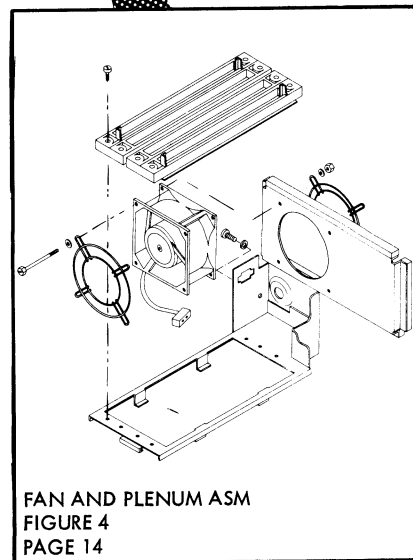
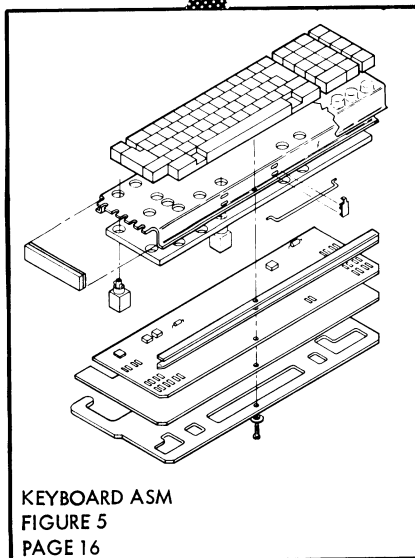
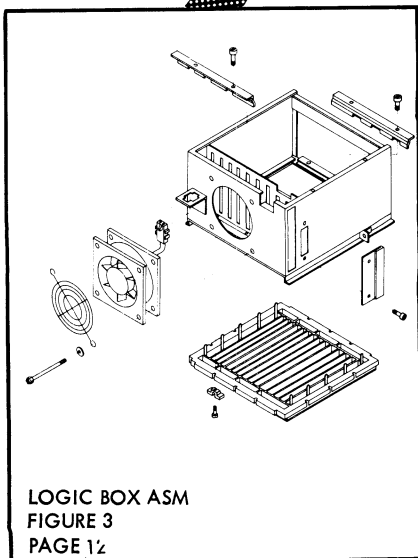
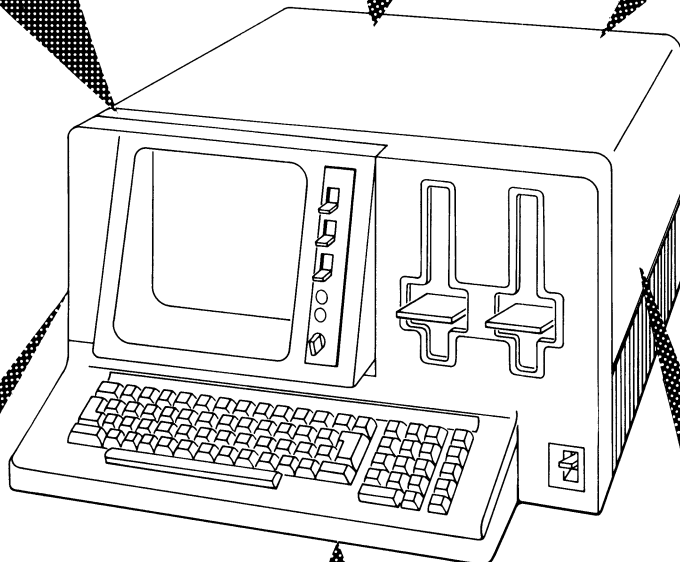
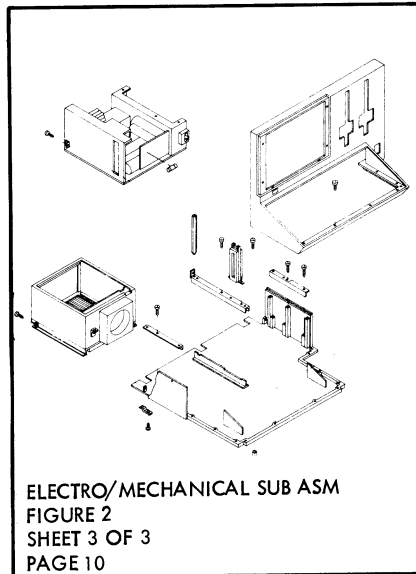
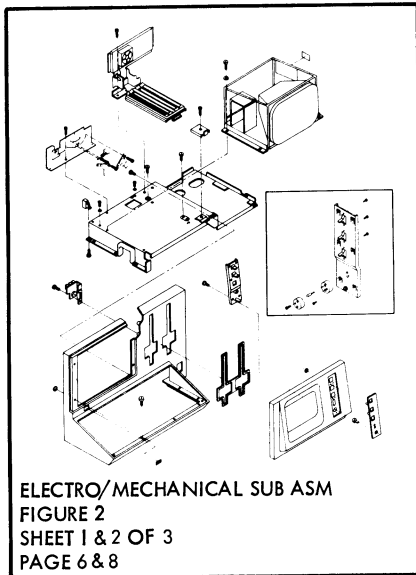
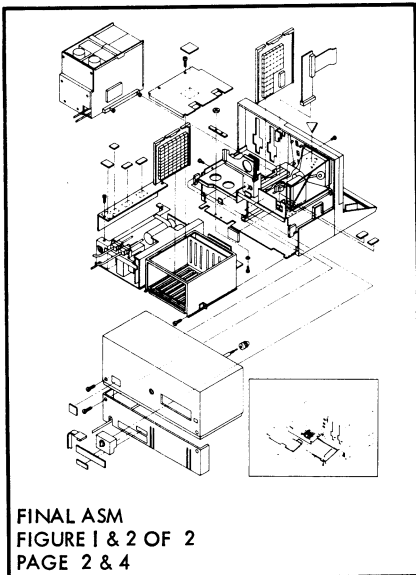
Refer to the Catalog Section when ordering parts. The example shown here should help guide you through a typical situation.

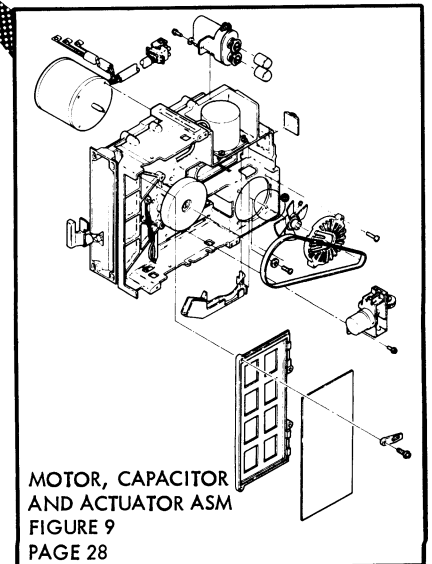
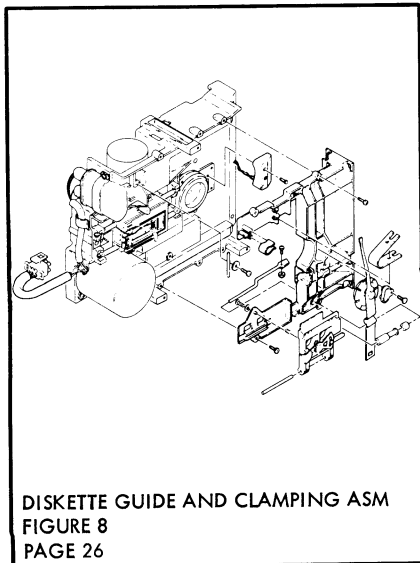
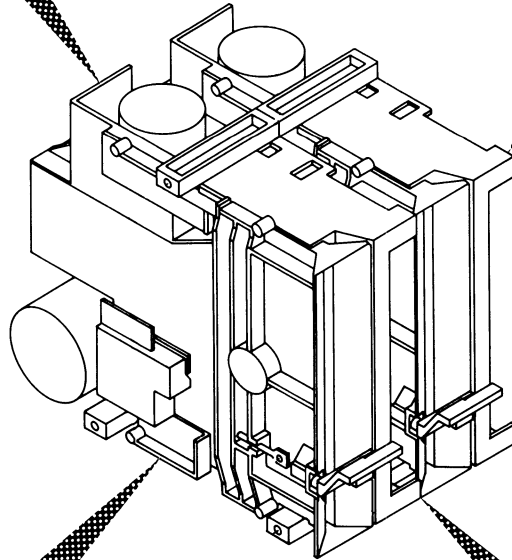
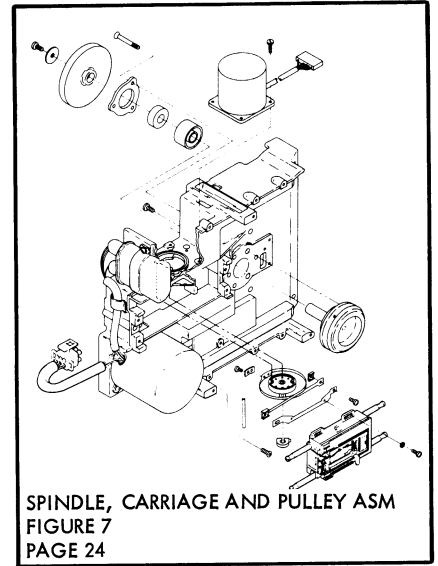
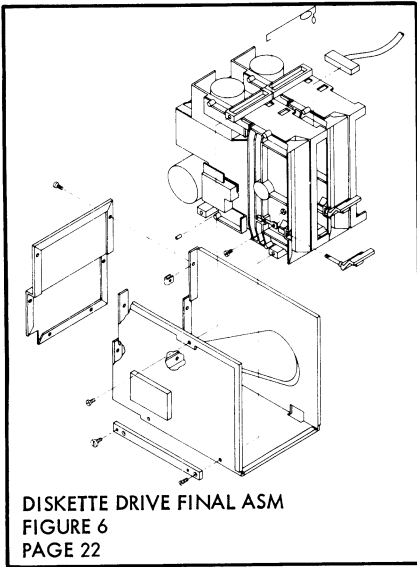
FIGURE-INDEX NUMBER	PART NUMBER	UNITS PER ASM.	DESCRIPTION			
			1	2	3	4
5 -	5891860 A	REF	POWER SUPPLY, NO. 3, 60 HZ			
-	5892846	REF	POWER SUPPLY, NO. 3, 50 HZ			
-	1631386	REF	POWER SUPPLY, NO. 3, 50 HZ-UK ONLY FOR NEXT HIGHER ASM SEE LIST 3-25 AND FOR ILLUSTRATION FIG. 5			
- 1	475124	1	• CLAMP, CAPACITOR			
- 2	59207	2	• SCREW, MACH BIND HD 8-32 NC-2A X .250 LG ATT PT			
- 3	5252807	1	• CAPACITOR, C3			
- 4	526378	2	• CAP			
- 5	2701001	1	• TRANSFORMER, 60HZ			
- 5	2701011	1	• TRANSFORMER, 50HZ			
- 5	5130347 B	1	• TRANSFORMER, 50 HZ-UK ONLY			
- 6	236849	4	• SCREW, MACH BIND HD 10-32 X .250 LG ATT PT			
- 7	56079	1	• WASHER, LOCK EXT T .204ID .4100D ATT PT			
- 8	351237	1	• SHIELD			
- 9	10170	2	• SCREW, MACH-BIND HD 6-32 X 1/4 LG ATT PT			
- 10	322766	1	• TERMINAL BOARD- 8 DRL SCREW TERMINAL			

If, for example, you need the *power supply, no. 3, 60 HZ*, order part number 5891860 **A** (all one-dot items will also be received). See the explanation of the Catalog Section for information on how the leading dots are used in the parts listings. If you need the *transformer, 50 HZ-UK only*, order part number 5130347 **B** (all two-dot items will also be received). Each part may also be ordered separately except in the following cases:

- Many detail parts are unavailable if they are part of an inseparable assembly or if they are part of an assembly that is ordered as a unit. In such cases they are noted "Assembly components are not replaceable."
- Parts found on purchased assemblies may not have IBM part numbers. These parts are noted "Assembly components not available."

In either case, order the assembly rather than the detail parts.







CATALOG SECTION

5110 MODEL 3

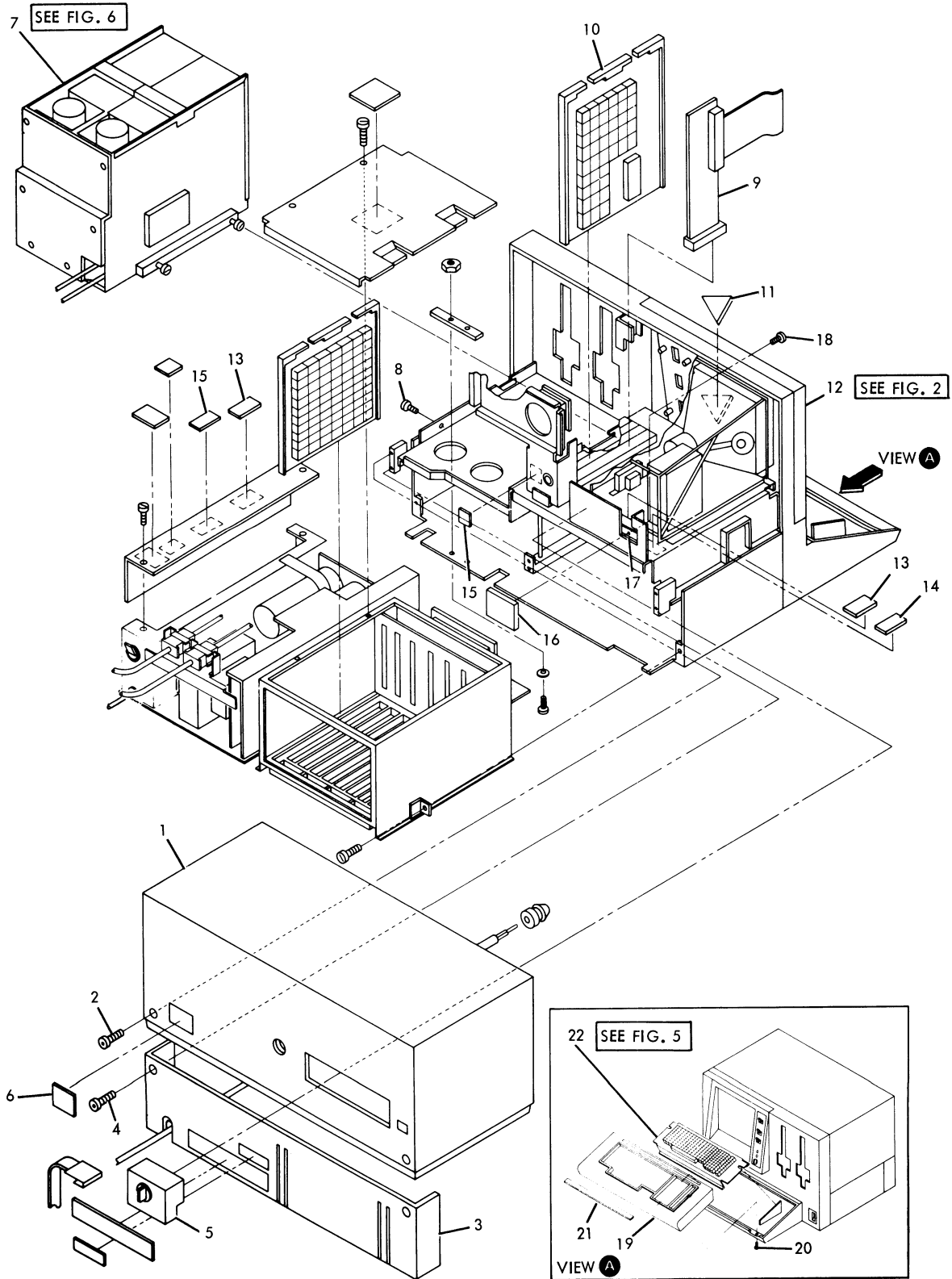


FIGURE 1. FINAL ASM. SHEET 1 OF 2. INDEX NOS. 1-22. SEE LIST 1.

FIGURE- INDEX NUMBER	PART NUMBER		UNITS PER ASM.	DESCRIPTION			
				1	2	3	4
1 -	NO NO.	NP	REF	FINAL ASM			
- 1	6842857		1	. COVER ASM, TOP			
- 2	8892170		2	. SCREW ATT PT			
- 3	6842855		1	. COVER ASM, REAR			
- 4	8892170		2	. SCREW ATT PT			
- 5	6843697		1	. TERMINATOR			
- 6	6843717		1	. LCGO			
- 7	NO NO.	NP	1	. DISKETTE DRIVE FINAL ASM USED ON 110V/50HZ MACHINES ONLY			
- 7	NO NO.	NP	1	. DISKETTE DRIVE FINAL ASM USED ON 220V/50HZ MACHINES ONLY			
- 7	NO NO.	NP	1	. DISKETTE DRIVE FINAL ASM USED ON 110V/60HZ MACHINES ONLY FOR DETAIL BREAKDOWN SEE FIGURE 6			
- 8	1621509		1	. SCREW, SOCKET HD M4 X 8MM LG ATT PT			
- 9	NO NO.		2	. DISKETTE INTERFACE CARD SEE CARD FOR PART NO.			
- 10	NO NO.		1	. DISKETTE ADAPTER SEE CARD FOR PART NO.			
- 11	5640730		1	. LABEL, WARNING			
- 12	NO NO.	NP	1	. ELECTRO/MECHANICAL SUB ASM FOR DETAIL BREAKDOWN SEE FIGURE 2			
- 13	5892077		1	. LABEL, WARNING-ENGLISH			
- 13	4406240		1	. LABEL, WARNING-FRENCH			
- 13	4406241		1	. LABEL, WARNING-GERMAN			
- 13	4406243		1	. LABEL, WARNING-ITALIAN			
- 13	4406242		1	. LABEL, WARNING-SPANISH			
- 13	4406244		1	. LABEL, WARNING-JAPANESE			
- 13	5562398		1	. LABEL, WARNING-FINNISH			
- 13	984117		1	. LABEL, WARNING-CANADIAN			
- 13	8551951		1	. LABEL, WARNING-SWEDISH			
- 14	6842897		1	. LABEL			
- 15	124943		1	. LABEL, HAZARDOUS AREA-ENGLISH			
- 15	8326722		1	. LABEL, HAZARDOUS AREA-FRENCH			
- 15	8326802		1	. LABEL, HAZARDOUS AREA-GERMAN			
- 15	8326800		1	. LABEL, HAZARDOUS AREA-ITALIAN			
- 15	8326798		1	. LABEL, HAZARDOUS AREA-SPANISH			
- 15	8326797		1	. LABEL, HAZARDOUS AREA-JAPANESE			
- 15	8326801		1	. LABEL, HAZARDOUS AREA-FINNISH			
- 15	984122		1	. LABEL, HAZARDOUS AREA-CANADIAN			
- 15	8551904		1	. LABEL, HAZARDOUS AREA-SWEDISH			
- 16	6842895		1	. COVER			
- 17	6842896		1	. PLATE			
- 18	1608428		1	. SCREW ATT PT			
- 19	6842859		1	. COVER ASM, KEYBOARD			
- 20	9395349		2	. SCREW ATT PT			
- 21	6842740		1	. ZIP STRIP ENGLISH			
- 21	6842744		1	. ZIP STRIP, FRENCH			
- 21	6842797		1	. ZIP STRIP, GERMAN			
- 21	6842822		1	. ZIP STRIP, ITALIAN			
- 21	6842823		1	. ZIP STRIP, KATAKANA			
- 22	5188694		1	. KEYBOARD ASM, EASIC (U.S.)			
- 22	5188695		1	. KEYBOARD ASM, APL (U.S.)			
- 22	5188696		1	. KEYBOARD ASM, APL AND BASIC (U.S.)			
- 22	5192703		1	. KEYBOARD ASM, EASIC (W.T.)			
- 22	5192704		1	. KEYBOARD ASM, APL (W.T.)			
- 22	5192705		1	. KEYBOARD ASM, APL AND BASIC (W.T.)			
- 22	8542861		1	. KEYBOARD, BASIC (KATAKANA)			
- 22	8542862		1	. KEYBOARD, APL (KATAKANA)			
- 22	8542863		1	. KEYBOARD, BASIC APL (KATAKANA) FOR DETAIL BREAKDOWN SEE FIGURE 5 AND FOR ILLUSTRATION FIGURE 1			

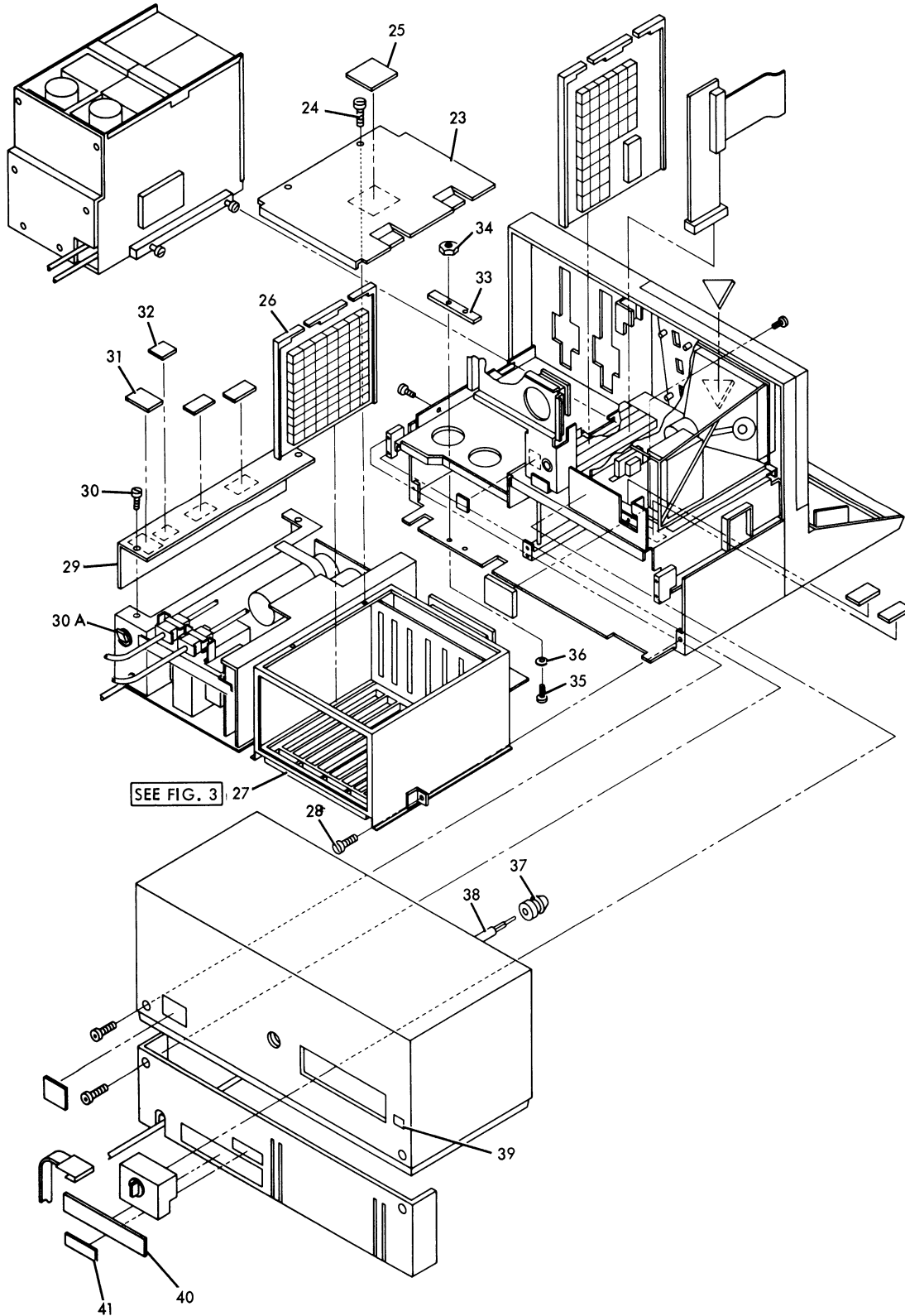


FIGURE 1. FINAL ASM. SHEET 2 OF 2. INDEX NOS. 23-41. SEE LIST 1.

FIGURE- INDEX NUMBER	PART NUMBER	UNITS PER ASM.	DESCRIPTION			
			1	2	3	4
1 - 23	6842684	1	.	COVER, LOGIC BCI		
- 24	1621170	2	.	SCREW, MACH-PAN HD M3 X 6MM LG		ATT PT
- 25	726561	1	.	LABEL, WARNING-ENGLISH		
- 25	7389311	1	.	LABEL, WARNING-FRENCH		
- 25	7389307	1	.	LABEL, WARNING-GERMAN		
- 25	7389292	1	.	LABEL, WARNING-ITALIAN		
- 25	7389309	1	.	LABEL, WARNING-SPANISH		
- 25	8551934	1	.	LABEL, WARNING-JAPANESE		
- 25	8551898	1	.	LABEL, WARNING-FINNISH		
- 25	7389959	1	.	LABEL, WARNING-CANADIAN		
- 25	8551906	1	.	LABEL, WARNING-SWEDISH		
- 26	NO NO.	1	.	LOGIC CARD		
				SEE CARD FOR PART NO.		
- 27	6842882	1	.	LOGIC BOX ASM		
				FOR DETAIL BREAKDOWN SEE FIGURE 3		
- 28	1621190	2	.	SCREW, MACH-PAN HD M4 X 8MM LG		ATT PT
- 29	NO NO.	1	.	COVER		
- 30	1621190	2	.	SCREW, MACH-PAN HD M4 X 8MM LG		ATT PT
- 30A	1821998	1	.	CIRCUIT BREAKER, 50/60 HZ GBGI		
- 30A	1821987	1	.	CIRCUIT BREAKER, 50/60 HZ U.S./CANADA		
- 31	138755	1	.	LABEL, VOLTAGE-ENGLISH		
- 31	6825828	1	.	LABEL, VOLTAGE-FRENCH		
- 31	6825819	1	.	LABEL, VOLTAGE-GERMAN		
- 31	6825820	1	.	LABEL, VOLTAGE-ITALIAN		
- 31	6825821	1	.	LABEL, VOLTAGE-SPANISH		
- 31	6825840	1	.	LABEL, VOLTAGE-JAPANESE		
- 31	6825818	1	.	LABEL, VOLTAGE-FINNISH		
- 31	984123	1	.	LABEL, VOLTAGE-CANADIAN		
- 31	8551903	1	.	LABEL, VOLTAGE-SWEDISH		
- 32	845762	1	.	LABEL, INFORMATION-ENGLISH		
- 32	6812822	1	.	LABEL, INFORMATION-FRENCH		
- 32	6812826	1	.	LABEL, INFORMATION-GERMAN		
- 32	6812824	1	.	LABEL, INFORMATION-ITALIAN		
- 32	6825868	1	.	LABEL, INFORMATION-JAPANESE		
- 32	6812823	1	.	LABEL, INFORMATION-SPANISH		
- 32	6812825	1	.	LABEL, INFORMATION-CANADIAN		
- 32	6825864	1	.	LABEL, INFORMATION-FINNISH		
- 32	8551907	1	.	LABEL, INFORMATION-SWEDISH		
- 33	6843714	1	.	PLATE, SHIPPING		
- 34	1622403	2	.	NUT, HEX M4 X 7 PL WSHR		ATT PT
- 35	1621063	2	.	SCREW		ATT PT
- 36	1622304	2	.	WASHER, FLAT 4.3 ID X 9 OD X 0.8 THK		ATT PT
- 37	1138167	1	.	BUSHING		
- 38	1608274	1	.	LINE CORD		
				BRAZIL, CANADA, JAPAN, MEXICO, VENEZUELA AND U.S.		
- 38	2451101	1	.	LINE CORD		
				AUSTRIA, DENMARK, FINLAND, GERMANY NETHERLANDS, NORWAY, SPAIN, AND SWEDEN		
- 38	2451102	1	.	LINE CORD		
				AUSTRALIA		
- 38	2451105	1	.	LINE CORD		
				U.K.		
- 38	2451111	1	.	LINE CORD		
				BELGIUM, FRANCE AND ITALY		
- 38	2451113	1	.	LINE CORD		
				SWITZERLAND		
- 38	2451102	1	.	LINE CORD		
				AUSTRALIA		
- 38	2451105	1	.	LINE CORD		
				U.K.		
- 38	2451111	1	.	LINE CORD		
				BELGIUM, FRANCE AND ITALY		
- 38	2451113	1	.	LINE CORD		
				SWITZERLAND		
- 39	4836797	1	.	LABEL, COMMUNICATION		
- 40	6843708	1	.	PLATE, INFORMATION		
- 41	855264	1	.	PLATE		
- 41	855265	1	.	PLATE		

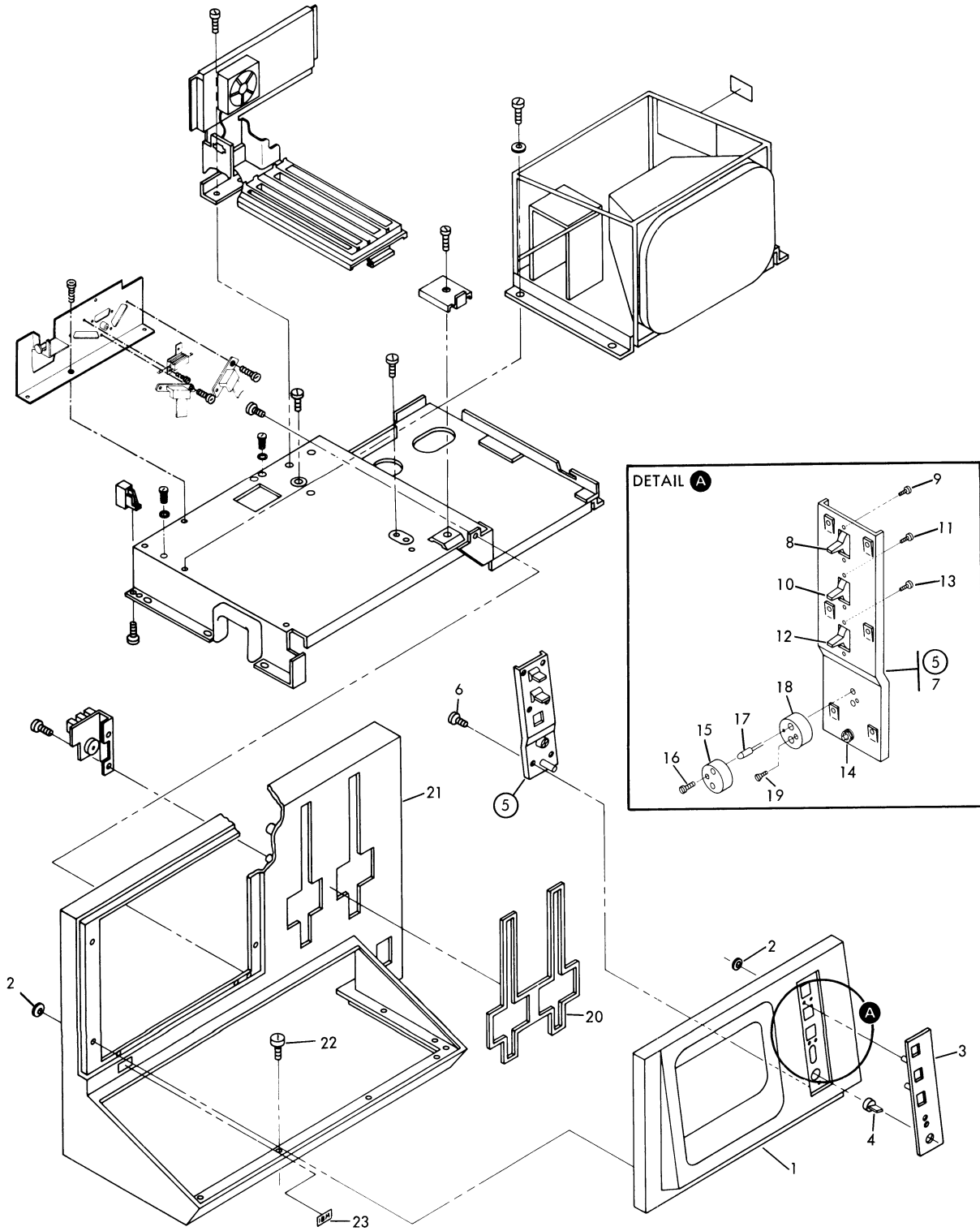


FIGURE 2. ELECTRO/MECHANICAL SUB ASM. SHEET 1 OF 3. INDEX NCS. 1-23. SEE LIST 2.

FIGURE- INDEX NUMBER	PART NUMBER		UNITS PER ASM.	DESCRIPTION
	NO	NP		
2 -			REF	ELECTRO/MECHANICAL SUB ASM FOR NEXT HIGHER ASM SEE FIGURE 1-12 AND FOR ILLUSTRATION FIGURE 2.
- 1	6842888		1	. CRT,BEZEL
- 2	848865		11	. CLIP
- 3	6842945		1	. PANEL ASM,NOMEN (TWO HOLE PANEL) ENGLISH,AFL OR EASIC
- 3	6842947		1	. PANEL ASM,NOMEN (TWO HOLE PANEL) FRENCH,AFL OR EASIC
- 3	6842949		1	. PANEL ASM,NOMEN (TWO HOLE PANEL) GERMAN,AFL OR BASIC
- 3	6842951		1	. PANEL ASM,NOMEN (TWO HOLE PANEL) ITALIAN,AFL OR BASIC
- 3	6842953		1	. PANEL ASM,NOMEN (TWO HOLE PANEL) SPANISH,AFL OR BASIC
- 3	6842955		1	. PANEL ASM,NOMEN (TWO HOLE PANEL) KATAKANA,AFL OR BASIC
- 3	6842957		1	. PANEL ASM,NOMEN (THREE HOLE PANEL) ENGLISH,AFL AND EASIC
- 3	6842959		1	. PANEL ASM,NOMEN (THREE HOLE PANEL) FRENCH,AFL AND BASIC
- 3	6842961		1	. PANEL ASM,NOMEN (THREE HOLE PANEL) GERMAN,AFL AND BASIC
- 3	6842963		1	. PANEL ASM,NOMEN (THREE HOLE PANEL) ITALIAN,AFL AND EASIC
- 3	6842965		1	. PANEL ASM,NOMEN (THREE HOLE PANEL) SPANISH,AFL AND EASIC
- 3	6842967		1	. PANEL ASM,NOMEN (THREE HOLE PANEL) KATAKANA,AFL AND EASIC
- 4	7364698		1	. KNOB,BRIGHTNESS
- 5	6842876		1	. CONTROL PANEL ASM
- 6	2451224		2	. SCREW,THD FORM-HEX WSHR 8-16 X 7/16 L
- 7	6842877		1	. . . PLATE,CONTROL PANEL
- 8	6842937		1	. . . SWITCH,DISPLAY REGISTER
- 9	1621000		2	. . . SCREW,MACH-FIL HD M2 X 4MM LG
- 10	6842938		1	. . . SWITCH,RESTART
- 11	1621000		2	. . . SCREW,MACH-FIL HD M2 X 4MM LG
- 12	6842937		1	. . . SWITCH,AFL AND BASIC NOT PART OF ASM MUST ORDER SEPARATELY
- 13	1621000		2	. . . SCREW,MACH-FIL HD M2 X 4MM LG NOT PART OF ASM MUST ORDER SEPARATELY
- 14	1589131		1	. . . POT,BRIGHTNESS
- 15	1608686		1	. . . CAP,LED
- 16	236550		1	. . . SCREW,MACH-BIND HD 4-40 X 3/8 LG
- 17	2397045		2	. . . LED
- 18	1608685		1	. . . RECEPTACLE,LED
- 19	472729		1	. . . SCREW, MACH FL HD 4-40 X .375LG
- 20	6842987		1	. BEZEL,DISKETTE DRIVE
- 21	6842863		1	. PANEL ASM,FRONT
- 22	5552875		11	. SCREW,THD FORM-HEX WSHR HD 8-16 X 9/16 L
- 23	6843719		1	. NAMEPLATE

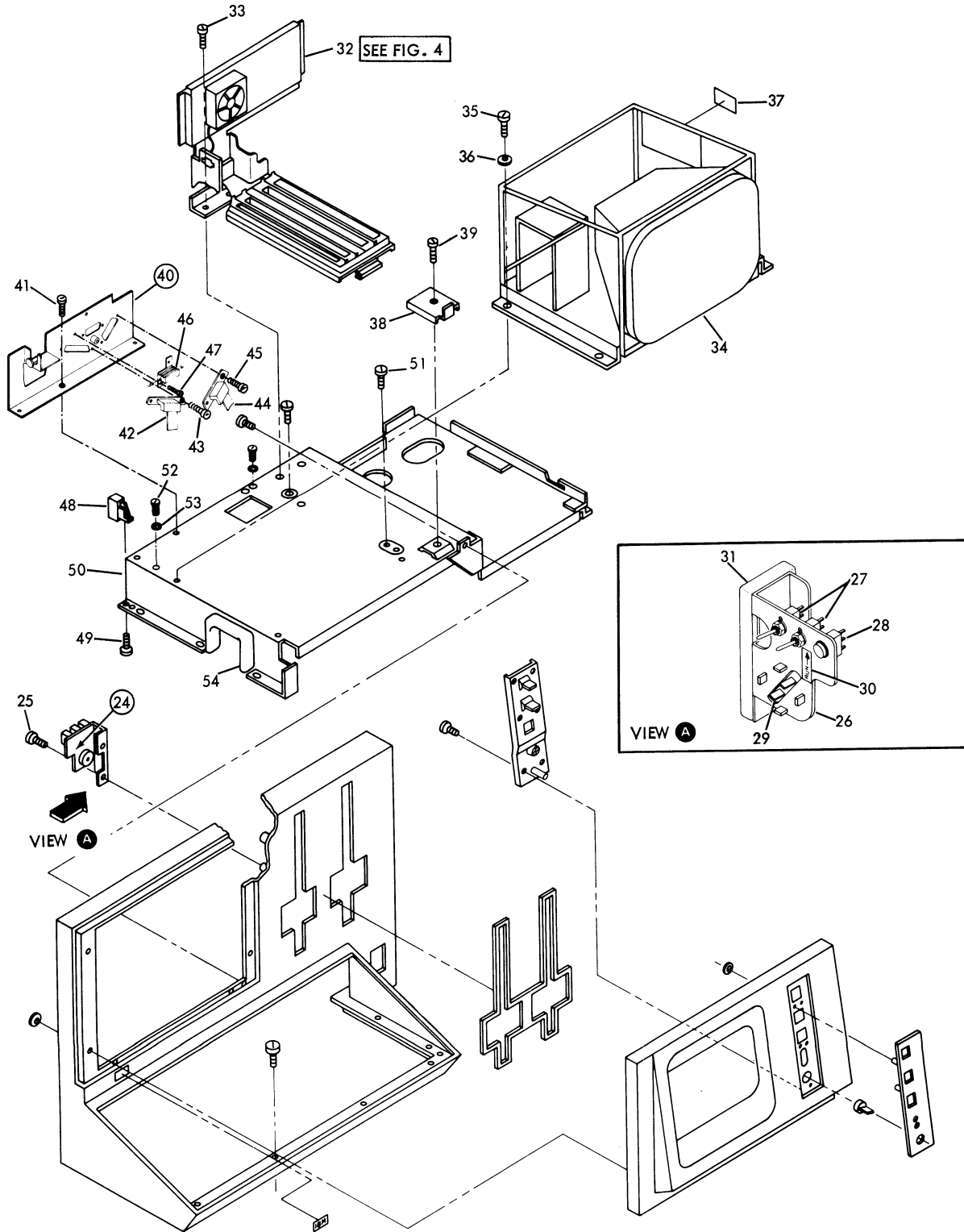


FIGURE 2. ELECTRO/MECHANICAL SUB ASM. SHEET 2 OF 3. INDEX NOS. 24-54. SEE LIST 2.

5110 MODEL 3

FIGURE- INDEX NUMBER	PART NUMBER	UNITS PER ASM.	DESCRIPTION			
			1	2	3	4
2 - 24	6842979	1	.	BRACKET ASM		
- 25	2451224	2	.	SCREW, THD FORM-HEX WSHR 8-16 X 7/16 L	ATT PT	
- 26	6842969	1	.	BRACKET, SWITCH MOUNTING		
- 27	1608899	2	.	SWITCH, RUN		
- 28	1608879	1	.	SWITCH, STEP		
- 29	2462066	1	.	ALARM		
- 30	4836798	1	.	LABEL		
- 31	6843716	1	.	PAD		
- 32	6842866	1	.	FAN AND PLENUM ASM		
				FOR DETAIL BREAKDOWN SEE FIGURE 4		
- 33	5319854	2	.	SCREW	ATT PT	
- 34	6842878	1	.	CRT		
				USED ON 50HZ MACHINES ONLY		
- 34	6842912	1	.	CRT		
				USED ON 60HZ MACHINES ONLY		
- 35	1621811	4	.	SCREW, THD FORM-HEX WSHR HD M4 X 10MM LG	ATT PT	
- 36	1622304	4	.	WASHER, FLAT 4.3 ID X 9 OD X 0.8 THK	ATT PT	
- 37	138747	1	.	LABEL, VOLTAGE		
- 38	6842942	1	.	CLAMP		
- 39	1621061	1	.	SCREW	ATT PT	
- 40	6842982	1	.	BRACKET ASM		
- 41	5319854	3	.	SCREW	ATT PT	
- 42	6842933	1	.	CABLE ASM, RECEPTACLE CONN.	ATT PT	
- 43	1621176	2	.	SCREW, MACH-FAN HD M3 X 4MM LG	ATT PT	
- 44	6842934	1	.	CABLE ASM, RECEPTACLE CONN.		
- 45	1621176	2	.	SCREW, MACH-FAN HD M3 X 4MM LG	ATT PT	
- 46	5240461	1	.	RESISTOR, POWER		
- 47	1621170	2	.	SCREW, MACH-FAN HD M3 X 6MM LG	ATT PT	
- 48	6842914	2	.	BLOCK		
- 49	2451224	2	.	SCREW, THD FORM-HEX WSHR 8-16 X 7/16 L	ATT PT	
- 50	NO NO.	NP	REF	SUPPORT, UPPER		
- 51	1621190	3	.	SCREW, MACH-PAN HD M4 X 8MM LG	ATT PT	
- 52	1621197	2	.	SCREW, MACH-PAN HD M4 X 6MM LG	ATT PT	
- 53	1622346	2	.	WASHER, LOCK-EXT T 4.3 ID X 8 OD	ATT PT	
- 54	6843720	1	.	FOAM		

FOR PARTS
NOT SHOWN
SEE FIG. 1

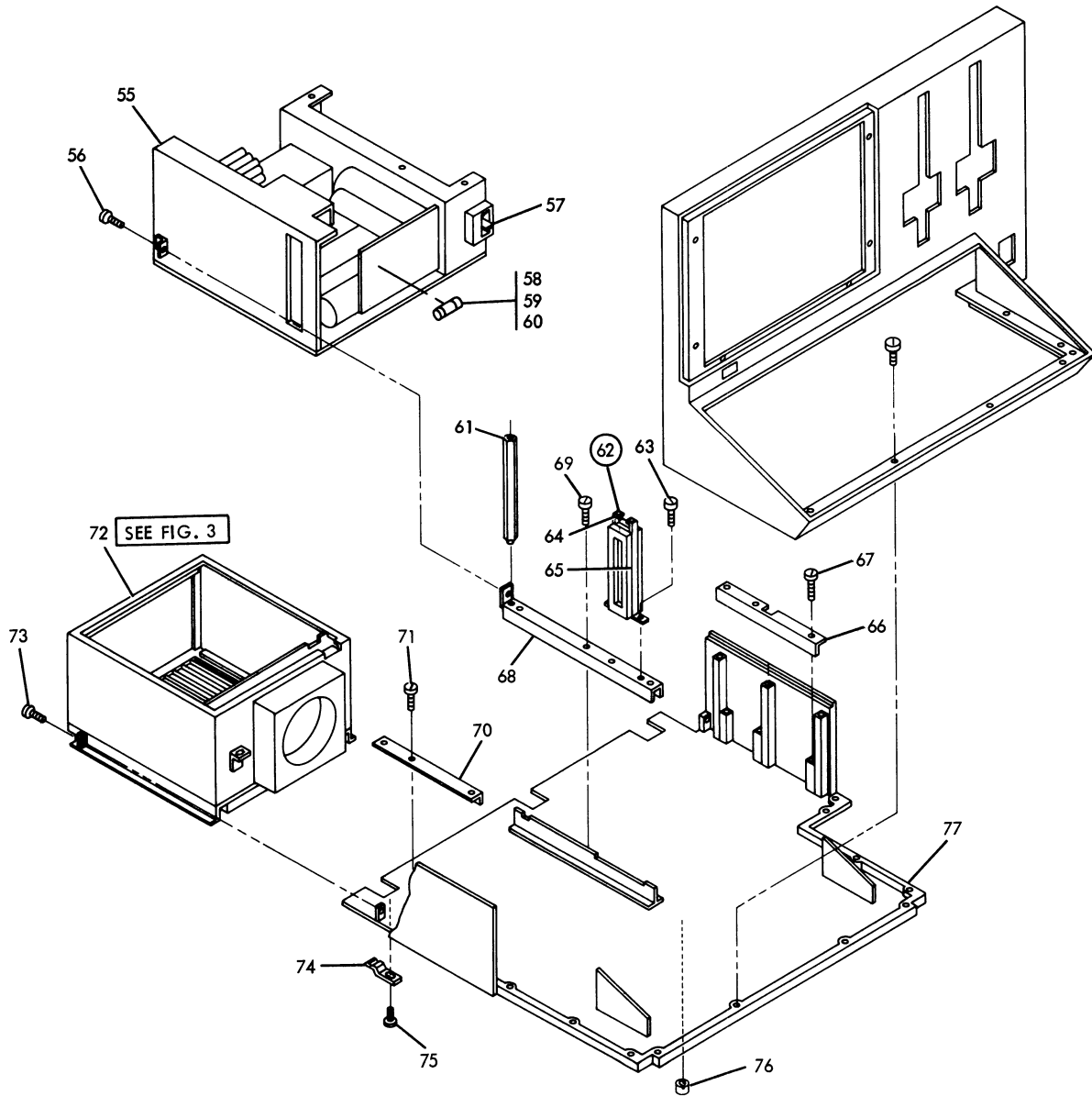


FIGURE 2. ELECTRO/MECHANICAL SUE ASM. SHEET 3 OF 3. INDEX NOS. 55-77.

FIGURE- INDEX NUMBER	PART NUMBER	UNITS PER ASM.	DESCRIPTION			
			1	2	3	4
2 - 55	6842903	1	. POWER SUPPLY ASM USED ON 110V/60HZ MACHINES ONLY			
- 55	6842974	1	. POWER SUPPLY ASM USED ON 220V/60HZ MACHINES ONLY			
- 55	6842976	1	. POWER SUPPLY ASM USED ON 110V/50HZ MACHINES ONLY			
- 55	6842978	1	. POWER SUPPLY ASM USED ON 220V/50HZ MACHINES ONLY			
- 55	6842989	1	. POWER SUPPLY ASM USED ON 110V/60HZ GBGI MACHINES ONLY SEE FIGURE 1 TO ORDER APPROPRIATE LABELS			
- 56	1621190	2	. SCREW,MACH-PAN HD M4 X 8MM LG ATT PT			
- 57	6842984	1	. SWITCH			
- 58	855252	1	. FUSE,3A			
- 59	855253	1	. FUSE,-5VDC,1A			
- 60	855252	1	. FUSE,+24VDC,3A			
- 61	6842875	1	. STANDOFF			
- 62	6842868	1	. DUCT ASM			
- 63	1621190	2	. SCREW,MACH-PAN HD M4 X 8MM LG ATT PT			
- 64	6842870	1	. . AIR VENT			
- 65	6842883	2	. . FOAM			
- 66	6840705	1	. RETAINER,BIT			
- 67	2451224	3	. SCREW,THD FORM-HEX WSHR 8-16 X 7/16 L ATT PT			
- 68	6842873	1	. RETAINER,CENTER			
- 69	2451224	3	. SCREW,THD FORM-HEX WSHR 8-16 X 7/16 L ATT PT			
- 70	6842874	1	. RETAINER,LH			
- 71	2451224	3	. SCREW,THD FORM-HEX WSHR 8-16 X 7/16 L ATT PT			
- 72	6842882	1	. LOGIC BOX ASM FOR DETAIL BREAKDOWN SEE FIGURE 3			
- 73	1621190	2	. SCREW,MACH-PAN HD M4 X 8MM LG ATT PT			
- 74	6836286	3	. DETENT			
- 75	2451224	3	. SCREW,THD FORM-HEX WSHR 8-16 X 7/16 L ATT PT			
- 76	1608441	2	. INSERT,SECURITY USED ON 110V/60HZ MACHINES ONLY			
- 76	6841964	2	. INSERT,SECURITY USED ON 220V/60HZ GBGI,110V/50HZ, 220V/50HZ,AND 110V/60HZ GBGI MACHINES			
- 77	NO NO.	NP	REF	. LOWER STRUCTURE		

FOR PARTS
NOT SHOWN
SEE FIG. 2

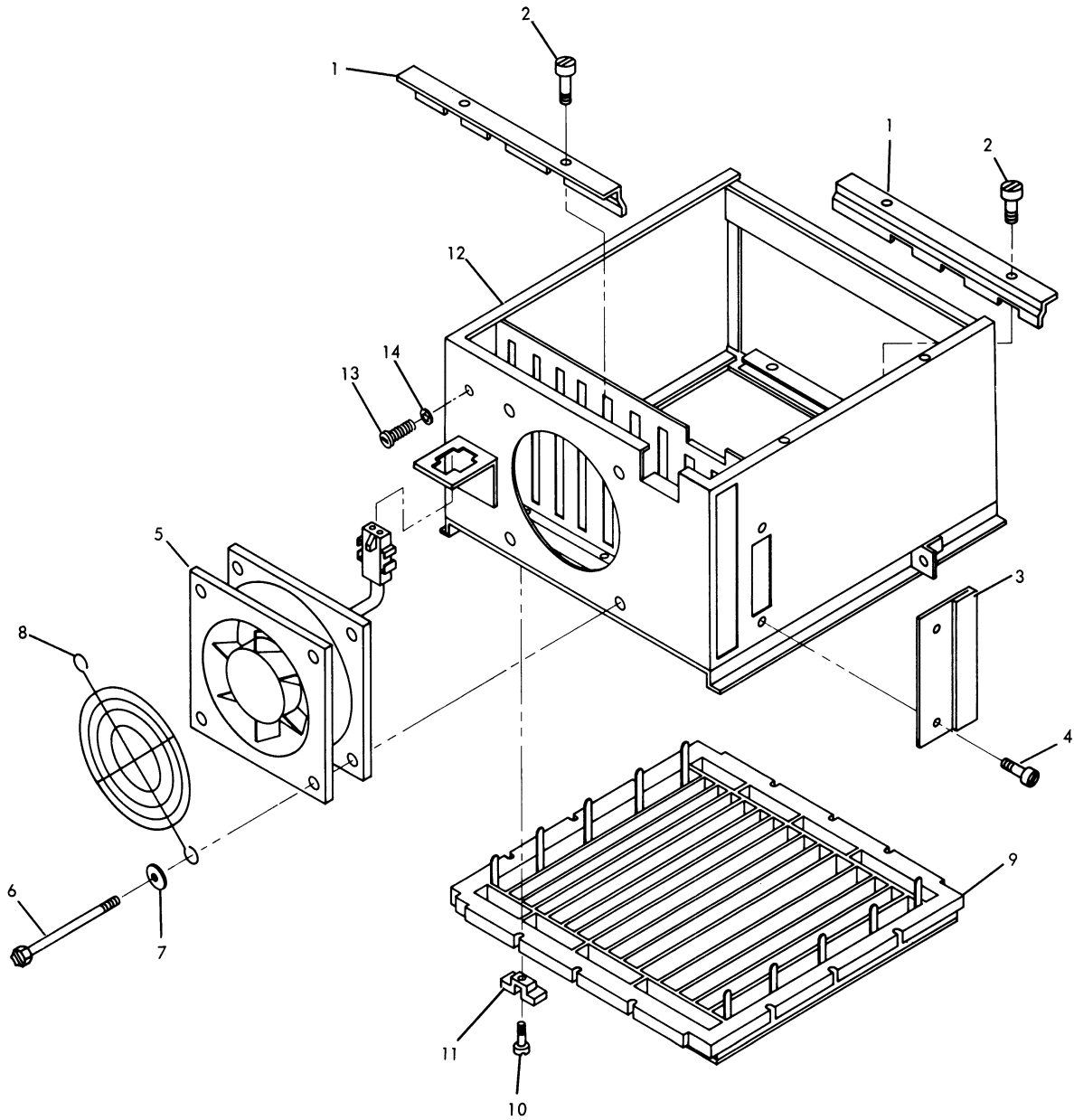


FIGURE 3, LOGIC BOX ASM, SEE LIST 3.

FIGURE- INDEX NUMBER	PART NUMBER	UNITS PER ASM.	DESCRIPTION			
			1	2	3	4
3 -	6842882	1	LOGIC BOX ASM FOR NEXT HIGHER ASM SEE FIGURE 2-72 AND FOR ILLUSTRATION FIGURE 3			
- 1	6842893	2	. BRACKET			
- 2	1621170	4	. SCREW, MACH-PAN HD M3 X 6MM LG			
- 3	6842886	1	. CABLE RST AND COVER			
- 4	1621190	2	. SCREW, MACH-PAN HD M4 X 8MM LG			
- 5	6842972	1	. FAN ASM			
- 6	438571	4	. SCREW, BIND HD 6-32 NC X 1.75 LG			
- 7	1622334	4	. WASHER, LOCK-INT T 4.3 ID X 8 OD			
- 8	2546641	1	. GUARD			
- 9	4360100	1	. BOARD ASM			
- 10	1621023	12	. SCREW			
- 11	813179	12	. CLAMP			
- 12	6842879	1	. LOGIC BOX			
- 13	1621197	1	. SCREW, MACH-PAN HD M4 X 6MM LG			
- 14	1622346	1	. WASHER, LOCK-EXT T 4.3 ID X 8 OD			

FOR PARTS
NOT SHOWN
SEE FIG. 2

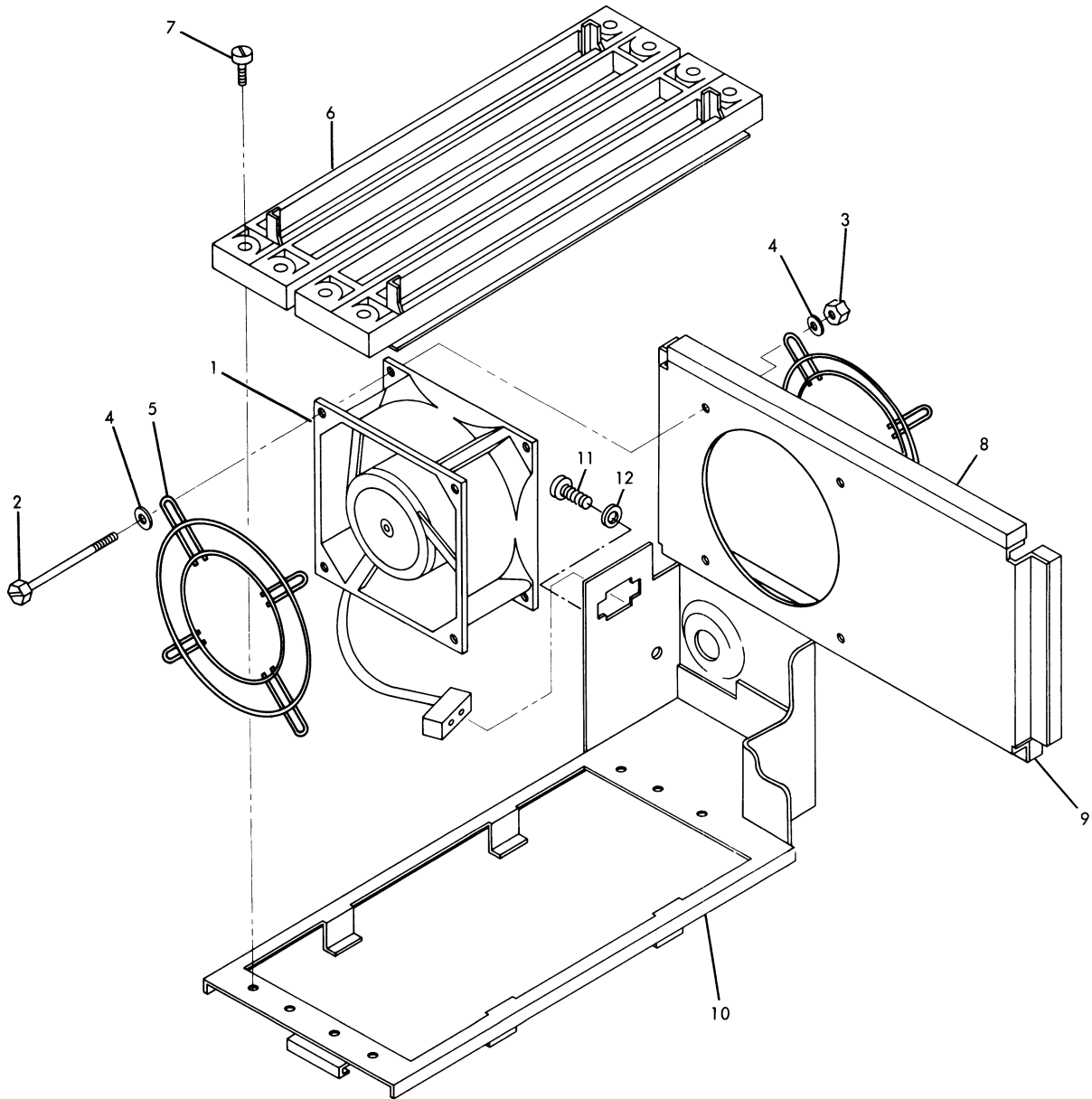


FIGURE 4. FAN AND PLENUM ASM. SEE LIST 4.

FIGURE- INDEX NUMBER	PART NUMBER	UNITS PER ASM.	DESCRIPTION			
			1	2	3	4
4 -	6842866	REF	FAN AND PLENUM ASM FOR NEXT HIGHER ASM SEE FIGURE 2-32 AND FOR ILLUSTRATION FIGURE 4			
- 1	4360147	1	. FAN ASM			
- 2	5145492	4	. SCREW			
- 3	1622403	4	. NUT,HEX M4 X 7 FL WSHR			
- 4	1622334	8	. WASHER,LOCK-INT T 4.3 ID X 8 OD			
- 5	5130688	2	. GUARD, FAN			
- 6	4360110	1	. BCARD ASM			
- 7	1621193	4	. SCREW,MACH-PAN HD M4 X 16MM LG			
- 8	6841457	2	. FCAM			
- 9	6841458	2	. FCAM			
- 10	6842865	1	. FAN PLENUM			
- 11	1621197	1	. SCREW,MACH-PAN HD M4 X 6MM LG			
- 12	1622346	1	. WASHER,LOCK-EXT T 4.3 ID X 8 OD			

FOR PARTS
NOT SHOWN
SEE FIG. 1

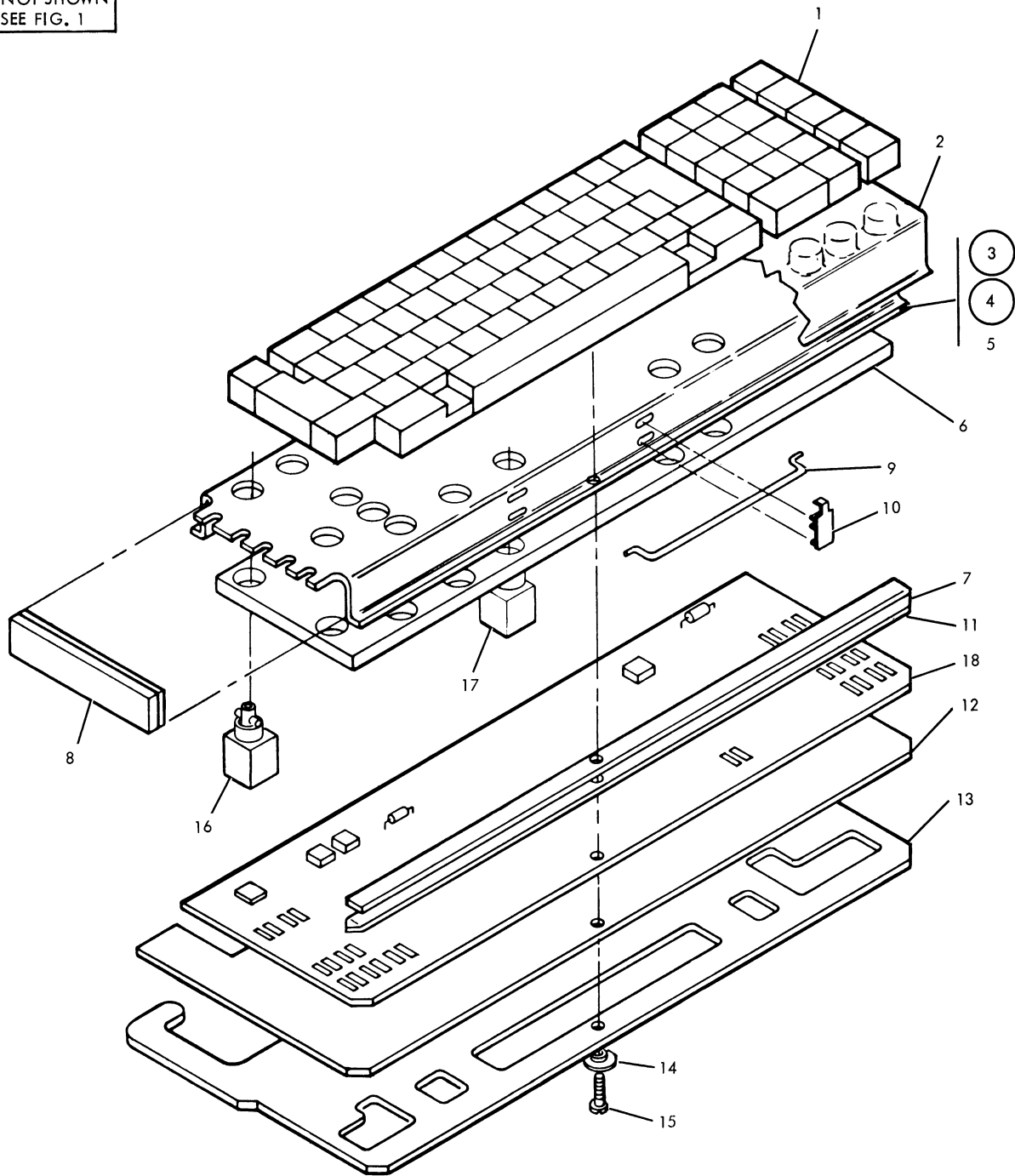
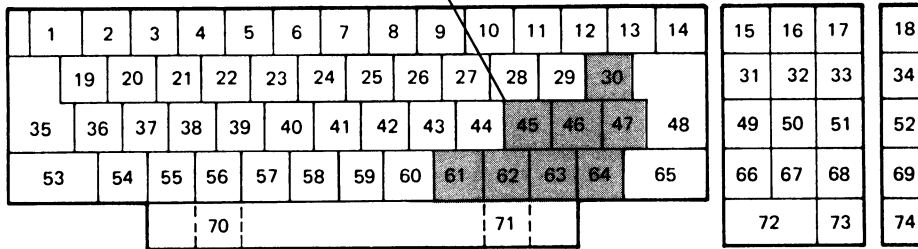


FIGURE 5. KEYBOARD ASM. SEE LIST 5.

FIGURE- INDEX NUMBER	PART NUMBER	UNITS PER ASM.	DESCRIPTION				
			1	2	3	4	
5 -	5186694	REF	KEYBOARD	ASM,	BASIC	(U.S.)	
-	5186695	REF	KEYBOARD	ASM,	APL	(U.S.)	
-	5186696	REF	KEYBOARD	ASM,	AEL AND BASIC	(U.S.)	
-	5192703	REF	KEYBOARD	ASM,	BASIC	(W.T.)	
-	5192704	REF	KEYBOARD	ASM,	APL	(W.T.)	
-	5192705	REF	KEYBOARD	ASM,	APL AND BASIC	(W.T.)	
-	8542861	REF	KEYBOARD,	BASIC	(KATAKANA)		
-	8542862	REF	KEYBOARD,	APL	(KATAKANA)		
-	8542863	REF	KEYBOARD,	BASIC	AEL	(KATAKANA)	
							FOR NEXT HIGHER ASM SEE FIGURE 1-22 AND FOR ILLUSTRATION FIGURE 5
- 1	1865348	1	. KEYBUTTON	GROUP,	BASIC		
							FOR WT ORDER THIS AND SEE FIGURE 5C
- 1	1864995	1	. KEYBUTTON	GROUP,	APL AND BASIC		
							FOR WT ORDER THIS AND SEE FIGURE 5C
- 1	1864996	1	. KEYBUTTON	GROUP,	APL		
							FOR WT ORDER THIS AND SEE FIGURE 5C FOR DETAIL BREAKDOWN SEE FIGURES 5A,B,C
- 2	1643294	1	. SHIELD				
- 3	1865347	1	. HARDWARE	GROUP	ASM		
- 4	1643298	1	. . FRAME	AND	PAD	ASM	
- 5	1864481	1	. . .	FRAME			
- 6	1864482	1	. . .	PAD			
- 7	1643292	2	. . .	STRIP,	FOAM		
- 8	1864454	2	. .	PLATE,	END		
- 9	5183361	1	. .	STABILIZER	ASM		
- 10	5183362	2	. .	PIVOT,	STABILIZER		
- 11	1643293	2	. .	INSULATOR,	TCF		
- 12	1864483	1	. .	INSULATOR,	BASE		
- 13	1864484	1	. .	PLATE,	BASE		
- 14	1865335	6	. .	BUSHING			ATT PT
- 15	1786825	6	. .	SCREW			ATT PT
- 16	1748131	73	. .	MODULE,	SENSING		
- 17	1643297	1	. .	MODULE,	NO SENSING		
- 18	1865349	1	. BOARD	ASM			

THE SHADED KEYBUTTONS CHANGE FOR DIFFERENT COUNTRIES

SEE FIG. 5

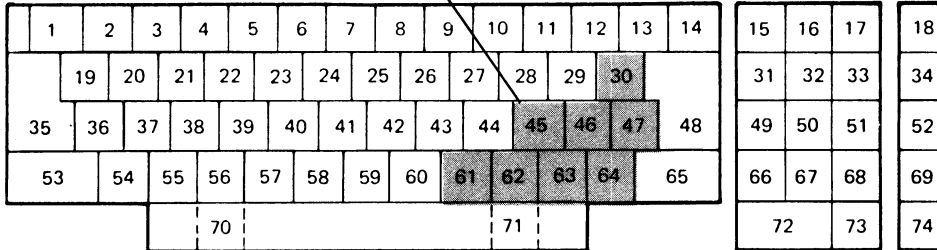


BASIC				BASIC+APL				APL			
KEY	PART NUMBER	KEY	PART NUMBER	KEY	PART NUMBER	KEY	PART NUMBER	KEY	PART NUMBER	KEY	PART NUMBER
1	5192573	38	5192555	1	5192425	38	5192601	1	5192425	38	5192484
2	5192574	39	5192556	2	5192426	39	5192603	2	5192426	39	5192486
3	5192427	40	5192557	3	5192427	40	5192605	3	5192427	40	5192488
4	5192428	41	5192558	4	5192428	41	5192607	4	5192428	41	5192490
5	5192429	42	5192560	5	5192429	42	5192609	5	5192429	42	5192492
6	5192430	43	5192561	6	5192430	43	5192611	6	5192430	43	5192494
7	1853592	44	5192563	7	1853592	44	5192613	7	1853592	44	5192496
8	5192432	45	5192497	8	5192432	45	5192497	8	5192432	45	5192497
9	5192575	46	5192498	9	5192433	46	5192498	9	5192433	46	5192498
10	5587748	47	5192499	10	5192434	47	5192499	10	5192434	47	5192499
11	5192435	48	5192474	11	5192435	48	5192474	11	5192435	48	5192474
12	1853563	49	5192500	12	5192436	49	5192500	12	5192436	49	5192500
13	1853547	50	5192501	13	1853547	50	5192501	13	1853547	50	5192501
14	1853562	51	5192502	14	1853562	51	5192502	14	1853562	51	5192502
15	1755806	52	5192571	15	1755806	52	5192503	15	1755806	52	5192503
16	1853560	53	5192472	16	1853560	53	5192472	16	1853560	53	5192472
17	1853561	54	5192564	17	1853561	54	5192615	17	1853561	54	5192505
18	5192438	55	5192565	18	5192438	55	5192617	18	5192438	55	5192508
19	5192533	56	5192566	19	5192578	56	5192619	19	5192444	56	5192511
20	5192535	57	5192567	20	5192683	57	5192621	20	5192447	57	5192513
21	5192537	58	5192568	21	5192581	58	5192623	21	5192450	58	5192515
22	5192538	59	5192569	22	5192583	59	5192525	22	5192452	59	5192517
23	5192539	60	5192570	23	5192585	60	5192627	23	5192455	60	5192519
24	5192685	61	1854697	24	5192587	61	1854697	24	5192458	61	1854697
25	5192544	62	1854698	25	5192589	62	1854698	25	5192463	62	1854698
26	5192547	63	5192572	26	5192591	63	5192522	26	5192461	63	5192522
27	5192549	64	5192523	27	5192593	64	5192523	27	5192464	64	5192523
28	5192550	65	5192524	28	5192595	65	5192524	28	5192467	65	5192524
29	1853564	66	5192525	29	5194343	66	5192525	29	5192470	66	5192525
30	5192471	67	5192526	30	5192471	67	5192526	30	5192471	67	5192526
31	5192475	68	5192527	31	5192475	68	5192527	31	5192475	68	5192527
32	5192476	69	5192528	32	5192476	69	5192528	32	5192476	69	5192528
33	5192466	70	5192999	33	5192466	70	5192999	33	5192466	70	5192999
34	5192551	71	5192999	34	5192477	71	5192999	34	5192477	71	5192999
35	5192441	72	5192529	35	5192441	72	5192529	35	5192441	72	5192529
36	5192552	73	5192531	36	5192597	73	5192531	36	5192480	73	5192531
37	5192554	74	5192532	37	5192599	74	5192532	37	5192482	74	5192532

FIGURE 5A. KEYBUTTON CHART.

THE SHADED KEYBUTTONS CHANGE FOR DIFFERENT COUNTRIES

SEE FIG. 5



KEY	BASIC KATAKANA		BASIC+APL KATAKANA				APL KATAKANA			
	KEY	PART NUMBER	KEY	PART NUMBER	KEY	PART NUMBER	KEY	PART NUMBER	KEY	PART NUMBER
1	38	1854594	1	8543214	38	8325826	1	8543214	38	8325826
2	39	1854595	2	8543228	39	8543228	2	8543238	39	8543228
3	40	8543215	3	8543215	40	8325827	3	8543215	40	8325827
4	41	8543216	4	8543216	41	8325828	4	8543216	41	8325828
5	42	8543217	5	8543217	42	8325829	5	8543217	42	8325829
6	43	8543218	6	8543218	43	8543229	6	8543218	43	8543229
7	44	8543219	7	8543219	44	8325830	7	8543219	44	8325830
8	45	8543220	8	8543220	45	8627174	8	8543220	45	8627174
9	46	8543221	9	8543221	46	8627175	9	8543221	46	8627175
10	47	8543222	10	8543222	47	8543232	10	8543222	47	8543232
11	48	8543223	11	8543223	48	5192474	11	8543223	48	5192474
12	49	5588019	12	8543239	49	5192500	12	8543239	49	5192500
13	50	2658604	13	2658604	50	5192501	13	2658604	50	5192501
14	51	2658605	14	2658605	51	5192502	14	2658605	51	5192502
15	52	1755806	15	1755806	52	5192503	15	1755806	52	8325839
16	53	1853560	16	1853560	53	5192472	16	1853560	53	5192472
17	54	1853561	17	1853561	54	8325831	17	1853561	54	8325831
18	55	5192438	18	5192438	55	8325832	18	5192438	55	8325832
19	56	8543240	19	8543240	56	8325833	19	8543240	56	8325833
20	57	1854736	20	8543241	57	8325834	20	8543241	57	8325834
21	58	1854737	21	8543242	58	8325835	21	8543242	58	8325835
22	59	1854738	22	8543243	59	8325836	22	8543243	59	8325836
23	60	5588021	23	8543244	60	8543233	23	8543244	60	8543233
24	61	8627172	24	8627172	61	8543234	24	8627172	61	8543234
25	62	1854741	25	8627176	62	8543235	25	8627176	62	8543235
26	63	1854742	26	8543246	63	8543236	26	8543246	63	8543236
27	64	1854743	27	8543247	64	8543237	27	8543247	64	8543237
28	65	8543226	28	8543226	65	5192524	28	8543226	65	5192524
29	66	5588024	29	8627177	66	5192525	29	8627177	66	5192525
30	67	8627173	30	8627173	67	5192426	30	8627173	67	5192426
31	68	5192475	31	5192475	68	5192527	31	5192475	68	5192527
32	69	5192476	32	5192476	69	5192528	32	5192476	69	5192528
33	70	5192466	33	5192466	70	5192999	33	5192466	70	5192999
34	71	5192551	34	5192477	71	5192999	34	8325840	71	5192999
35	72	5192441	35	5192441	72	8627178	35	5192441	72	8627178
36	73	1854746	36	8543249	73	8627179	36	8543249	73	8627179
37	74	1854747	37	8325825	74	5192532	37	8325825	74	5192532

FIGURE 5B. KEYBUTTON CHART.

BASIC						APL OR APL AND BASIC					
COUNTRY	KEY	PART NUMBER	COUNTRY	KEY	PART NUMBER	COUNTRY	KEY	PART NUMBER	COUNTRY	KEY	PART NUMBER
Austria/ Germany	30	5192629	Italy	30	5192631	Austria/ Germany	30	5192629	Italy	30	5192631
	45	5192633		45	5192637		45	5192633		45	5192637
	46	5192639		46	5192640		46	5192639		46	5192640
	47	5192643		47	5192650		47	5192643		47	5192650
	61	1854697		61	5192659		61	1854697		61	5192659
	62	5192653		62	5192654		62	5192653		62	5192654
	63	5192661		63	5192572		63	5192660		63	5192522
64	5192672	64	5192676	64	5192672	64	5192676				
French/ Canada	30	5192471	Spain	30	5192471	French/ Canada	30	5192471	Spain	30	5192471
	45	5192634		45	5192497		45	5192634		45	5192497
	46	5192640		46	5192498		46	5192640		46	5192498
	47	5192646		47	5192652		47	5192646		47	5192652
	61	1854697		61	1854697		61	1854697		61	1854697
	62	5192666		62	1854698		62	5192666		62	1854698
	63	5192665		63	5192572		63	5192664		63	5192522
64	5192523	64	5192678	64	5192523	64	5192678				
France	30	5192471	Brazil	30	5192471	France	30	5192471	Brazil	30	5192471
	45	5192634		45	5192635		45	5192634		45	5192635
	46	5192640		46	5192641		46	5192640		46	5192641
	47	5192649		47	5192645		47	5192649		47	5192645
	61	1854697		61	5192657		61	1854697		61	5192657
	62	5192654		62	1854698		62	5192654		62	1854698
	63	5192572		63	5192663		63	5192522		63	5192662
64	5192675	64	5192684	64	5192675	64	5192684				
Portugal	30	5192632	Finland/ Sweden	30	5192630	Portugal	30	5192632	Finland/ Sweden	30	5192630
	45	5192638		45	5192633		45	5192638		45	5192633
	46	5192498		46	5192642		46	5192498		46	5192642
	47	5192651		47	5192648		47	5192651		47	5192648
	61	1854697		61	5192658		61	1854697		61	5192658
	62	5192654		62	5192655		62	5192654		62	5192655
	63	5192572		63	5192668		63	5192522		63	5192667
64	5192523	64	5192674	64	5192523	64	5192674				
Belguim	30	5192471	Japan	30	5192471	Belguim	30	5192471	Japan	30	5192471
	45	5192634		45	5192497		45	5192634		45	5192497
	46	5192640		46	5192498		46	5192640		46	5192498
	47	5192644		47	5192499		47	5192644		47	5192499
	61	1854697		61	1854697		61	1854697		61	1854697
	62	5192654		62	5192656		62	5192654		62	5192656
	63	5192572		63	5192879		63	5192522		63	5192669
64	5192523	64	5192677	64	5192523	64	5192677				
Denmark/ Norway	30	5192630	UK/ Australia	30	5192471	Denmark/ Norway	30	5192630	UK/ Australia	30	5192471
	45	5192636		45	5192497		45	5192636		45	5192497
	46	5192642		46	5192498		46	5192642		46	5192498
	47	5192647		47	5192499		47	5192647		47	5192499
	61	1854697		61	1854697		61	1854697		61	1854697
	62	1854698		62	1854698		62	1854698		62	1854698
	63	5192572		63	5192671		63	5192522		63	5192670
64	5192674	64	5192679	64	5192674	64	5192679				
Spanish Speaking	30	5192471	International Same as U.S. Keyboard			Spanish Speaking	30	5192471	International Same as U.S. Keyboard		
	45	5192497					45	5192497			
	46	5192498					46	5192498			
	47	5192652					47	5192652			
	61	1854697					61	1854697			
	62	1854698					62	1854698			
	63	5192572					63	5192522			
64	5192523			64	5192523						

FIGURE 5C. KEYBUTTON CHART, WTC.

THIS PAGE INTENTIONALLY LEFT BLANK

FOR PARTS
NOT SHOWN
SEE FIG. 1

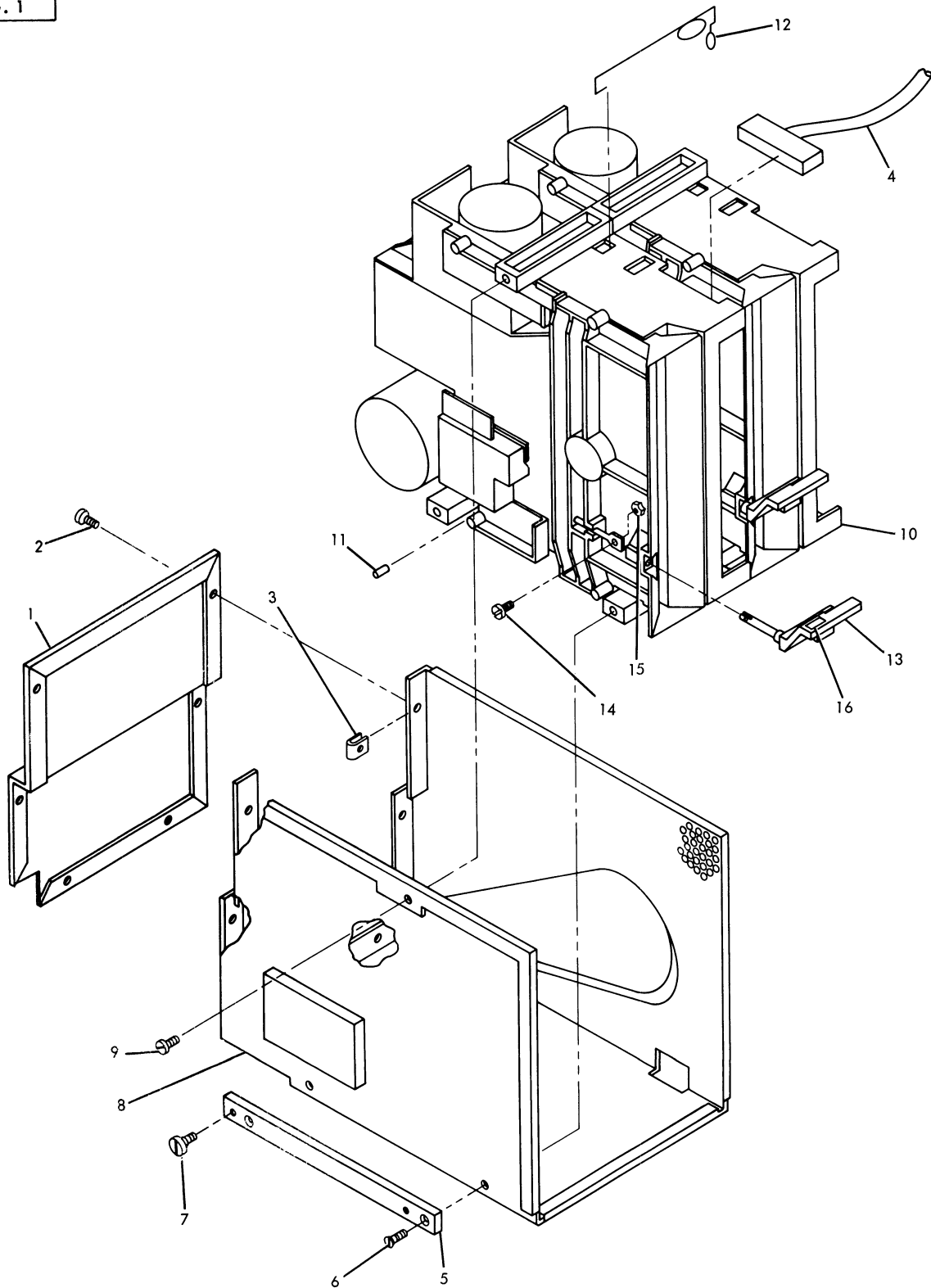


FIGURE 6. DISKETTE DRIVE FINAL ASM. SEE LIST 6.

5110 MODEL 3

FIGURE- INDEX NUMBER	PART NUMBER		UNITS PER ASM.	DESCRIPTION				
				1	2	3	4	
6 -	NO NO.	NP	REF	DISKETTE DRIVE, FINAL ASM USED ON 110V/50HZ MACHINES ONLY				
-	NO NO.	NP	REF	DISKETTE DRIVE, FINAL ASM USED ON 220V/50HZ MACHINES ONLY				
-	NO NO.	NP	REF	DISKETTE DRIVE, FINAL ASM USED ON 110V/60HZ MACHINES ONLY FOR NEXT HIGHER ASM SEE FIGURE 1-7 AND FOR ILLUSTRATION FIGURE 6				
- 1	6842889		1	. SHIELD				
- 2	1621190		6	. SCREW, MACH-PAN HD M4 X 8MM LG				ATT PT
- 3	6843721		6	. CLIP				ATT PT
- 4	6842851		2	. CABLE ASM				
- 5	6843260		1	. BAR				
- 6	1621309		2	. SCREW, MACH-FLAT HD M4 X 10MM LG				ATT PT
- 7	6838289		3	. SCREW				
- 8	6842869		1	. SHIELD				
- 9	1621197		2	. SCREW, MACH-PAN HD M4 X 6MM LG				ATT PT
- 10	4240512		2	. DISKETTE DRIVE USED ON 110V/50HZ MACHINES ONLY				
- 10	4240513		2	. DISKETTE DRIVE USED ON 220V/50HZ MACHINES ONLY				
- 10	4240516		2	. DISKETTE DRIVE USED ON 110V/60HZ MACHINES ONLY FOR DETAIL BREAKDOWN SEE FIGURES 7,8,9				
- 11	4240585		2	. PIN				ATT PT
- 12	4240586		3	. SPRING CLIP				ATT PT
- 13	6842908		2	. LATCH				
- 14	1621182		2	. SCREW, MACH-PAN HD M3.5 X 8MM LG				ATT PT
- 15	1622402		2	. NUT, HEX M3.5 X 6 FL WSHR				ATT PT
- 16	6843694		2	. LABEL (1,2)				

FOR PARTS
NOT SHOWN
SEE FIG. 6

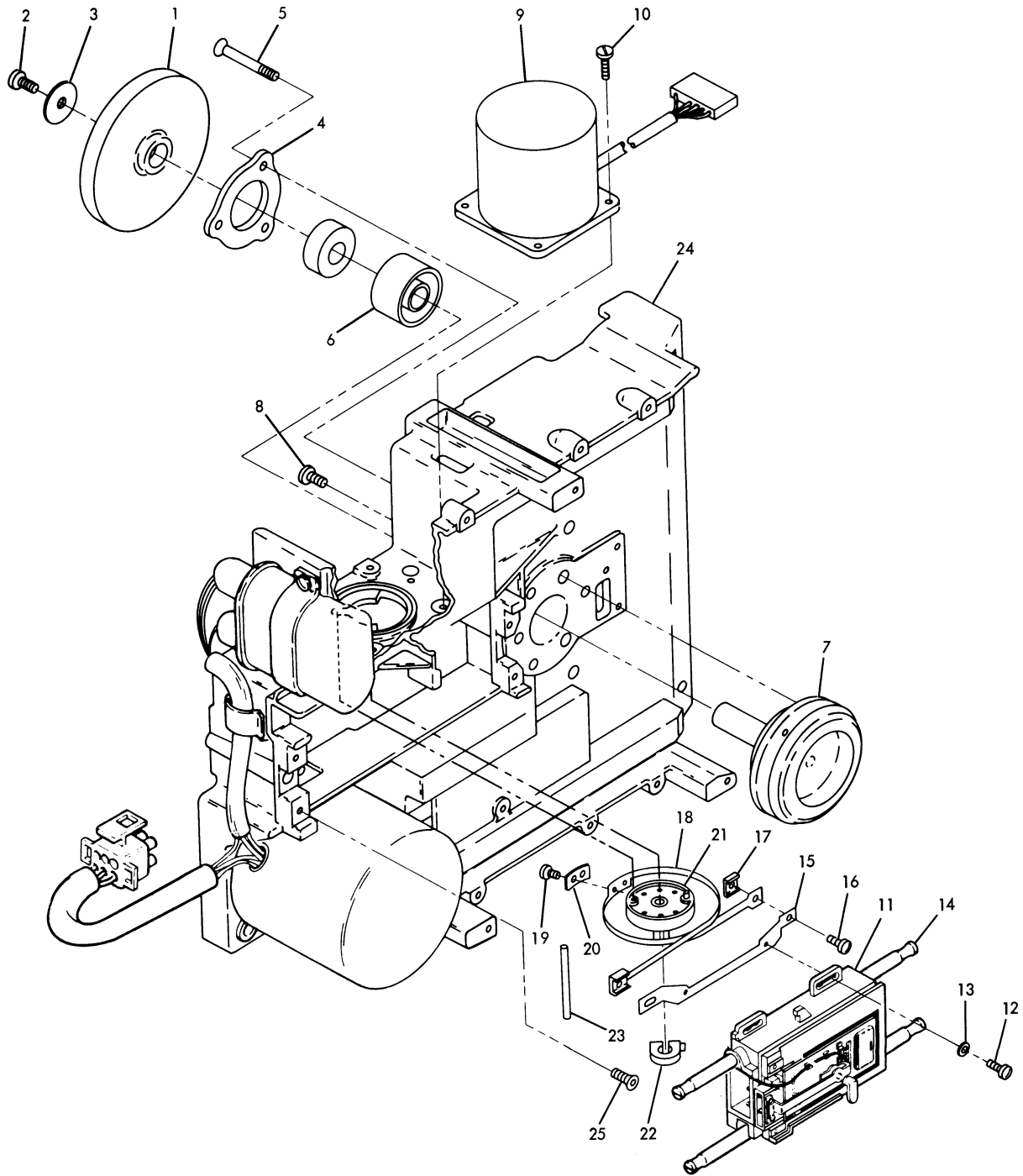


FIGURE 7. SPINDLE, CARRIAGE AND PULLEY ASM. SEE LIST 7.

5110 MODEL 3

FIGURE- INDEX NUMBER	PART NUMBER	UNITS PER ASM.	DESCRIPTION			
			1	2	3	4
7 -	NC NO.	1	SPINDLE,CARRIAGE AND PULLEY ASM FOR NEXT HIGHER ASM SEE FIGURE 6 AND FOR ILLUSTRATION FIGURE 7			
- 1	4240557 NR	1	. PULLEY			
- 2	5562071 NR	1	. SCREW,PULLEY MOUNTING 10-32 X 1/2 LG ATT PT			
- 3	49374 NR	1	. WASHER,FLAT NO. 10 X .53 OD X .08 THK ATT PT			
- 4	4240556 NR	1	. BEARING,RETAINER			
- 5	1621327 NR	3	. SCREW,FL HD M5 X 40MM LG ATT PT			
- 6	4240555 NR	1	. SPACER SET			
- 7	4240552 NR	1	. SPINDLE ASM			
- 8	1621190 NR	3	. SCREW,MACH-PAN HD M4 X 8MM LG ATT PT			
- 9	4240593	1	. STEPPER MOTOR			
- 10	2462685	4	. SCREW,THD FORM M4 X 10MM LG ATT PT			
- 11	4240620	1	. HEAD CARRIAGE			
- 12	1621170	2	. SCREW,MACH-PAN HD M3 X 6MM LG ATT PT			
- 13	1622302	2	. WASHER,FLAT 3.2 ID X 7 OD X 0.5 THK ATT PT			
- 14	4240573	2	. GUIDE ROD			
- 15	4240600	1	. BRACKET,MOUNTING			
- 16	1621170	2	. SCREW,MACH-PAN HD M3 X 6MM LG ATT PT			
- 17	4240601	2	. CLAMP ATT PT			
- 18	4240596	1	. DRIVE BAND			
- 19	1621170	1	. SCREW,MACH-PAN HD M3 X 6MM LG ATT PT			
- 20	4240599	1	. CLAMP ATT PT			
- 21	4240594	1	. PULLEY ASM			
- 22	2305493	1	. CLAMP ATT PT			
- 23	5562019	1	. TIMING PIN			
- 24	4240551 NR	1	. CASTING			
- 25	4240642	4	. SCREW,FL HD M4 X 12MM LG			

FOR PARTS
NOT SHOWN
SEE FIG. 6

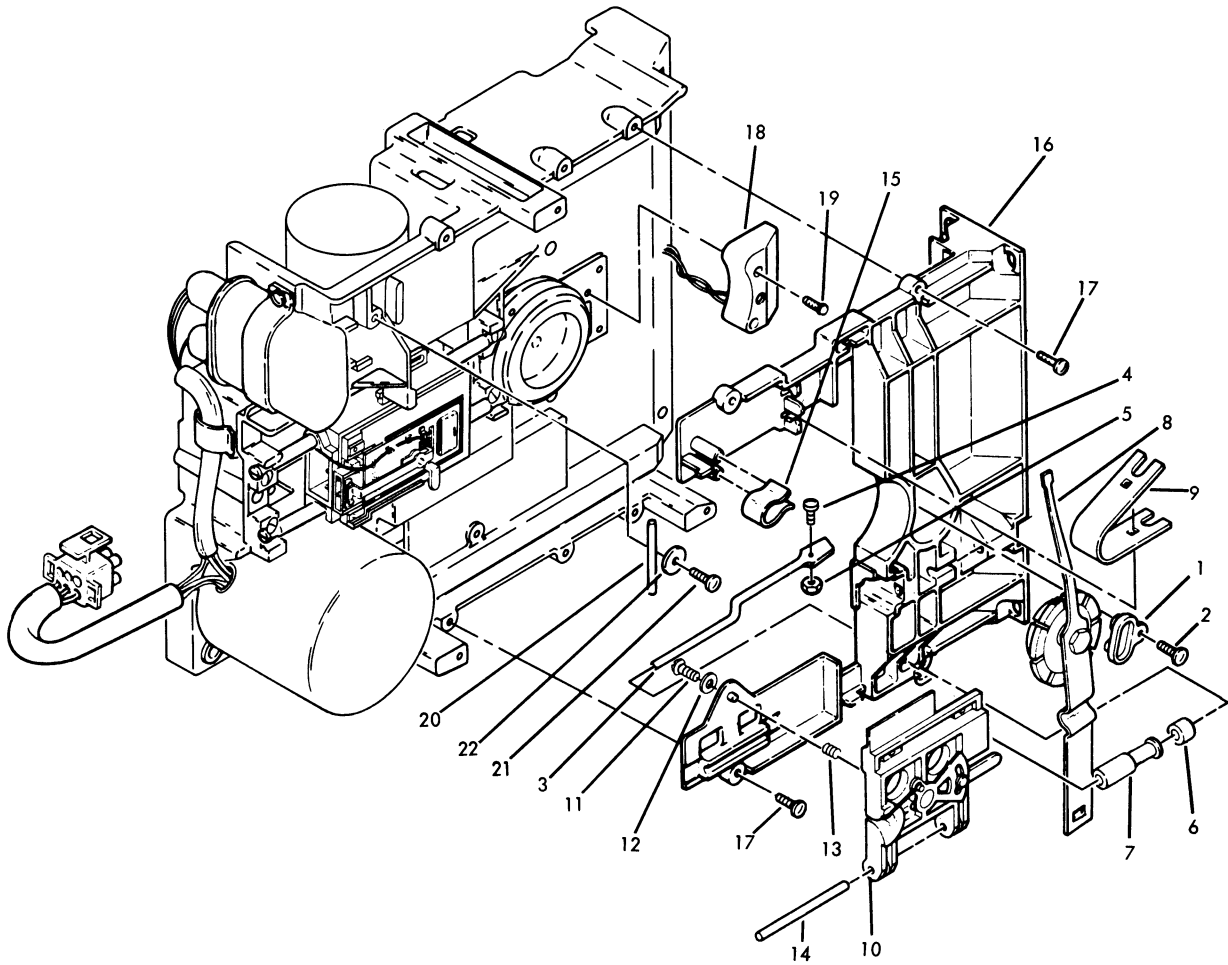


FIGURE 8. DISKETTE GUIDE AND CLAMPING ASM. SEE LIST 8.

FIGURE- INDEX NUMBER	PART NUMBER	UNITS PER ASM.	DESCRIPTION			
			1	2	3	4
8 -	NO NO.	1	DISKETTE GUIDE AND CLAMPING ASM FOR NEXT HIGHER ASM SEE FIGURE 6 AND FOR ILLUSTRATION FIGURE 8			
- 1	4240661	1	. LED ASM			
- 2	1621672	1	. SCREW,THD FORM M4 X 12MM LG			
- 3	4240592	1	. LEVER			
- 4	1621182	1	. SCREW,MACH-PAN HD M3.5 X 8MM LG			
- 5	1622402	1	. NUT,HEX M3.5 X 6 FL WSHR			
- 6	4240644	1	. ROLL			
- 7	4240614	1	. ROLLEB			
- 8	4240589	1	. COLLET ASM			
- 9	4240631	1	. TENSIGN SFRING			
- 10	4240580	1	. BAIL ASM			
- 11	1621672	1	. SCREW,THD FORM M4 X 12MM LG			
- 12	49374	1	. WASHER,FLAT NO. 10 X .53 OD X .08 THK			
- 13	4240583	1	. SPRING			
- 14	2462574	1	. PIN			
- 15	4240632	1	. RETAINER CLIP			
- 16	4240663	1	. GUIDE			
- 17	1621193	4	. SCREW,MACH-PAN HD M4 X 16MM LG			
- 18	4240576	1	. PIX ASM			
- 19	2462686	1	. SCREW,THD FORM M4 X 16MM LG			
- 20	5562019	1	. TIMING PIN			
- 21	2462685	1	. SCREW,THD FORM M4 X 10MM LG			
- 22	35229	1	. WASHER,11/64 ID X 7/16 OD			

FOR PARTS
NOT SHOWN
SEE FIG. 6

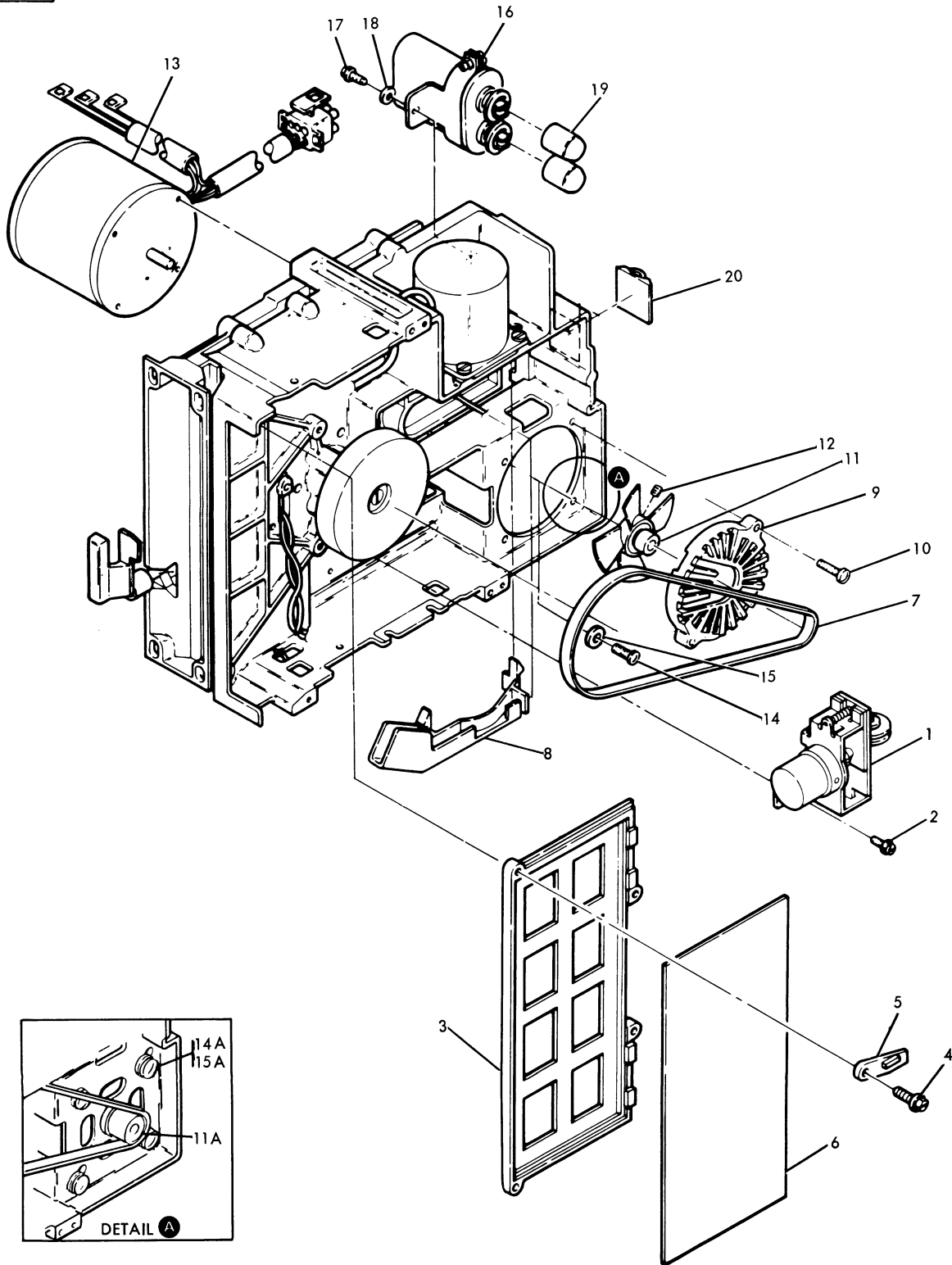


FIGURE 9. MOTOR, CAPACITOR AND ACTUATOR ASM. SEE LIST 9.

FIGURE- INDEX NUMBER	PART NUMBER	UNITS PER ASM.	DESCRIPTION			
			1	2	3	4
9 -	NO NO.	1	MOTOR, CAPACITOR AND ACTUATOR ASM FOR NEXT HIGHER ASM SEE FIGURE 6 AND FOR ILLUSTRATION FIGURE 9			
- 1	4240666	1	. ACTUATOR ASM			
- 2	2462685	2	. SCREW, THD FORM M4 X 10MM LG			
- 3	4240638	1	. CARD HOLDER			
- 4	2462686	4	. SCREW, THD FORM M4 X 16MM LG			
- 5	4240584	2	. CARD RETAINER			
- 6	NO NO.	1	. FILE CONTROL CARD SEE CARD FOR P.N.			
- 7	4240604	1	. BELT USED ON 50HZ MACHINES			
- 7	4240605	1	. BELT USED ON 60HZ MACHINES			
- 8	4240610	1	. GUIDE, HD LEAD			
- 9	4240671	1	. ENCLOSURE			
- 10	1621194	2	. SCREW, MACH-PAN HD M4 X 20MM LG LATE LEVEL MACHINES ONLY			
- 11A	4240587	1	. PULLEY ASM, 50HZ EARLY LEVEL MACHINES ONLY			
- 11A	4240588	1	. PULLEY ASM 60HZ EARLY LEVEL MACHINES ONLY			
- 11	4240675	1	. PULLEY ASM, 50HZ LATE LEVEL MACHINES ONLY			
- 11	4240673	1	. PULLEY ASM, 60HZ LATE LEVEL MACHINES ONLY			
- 12	1621719	1	. SET SCREW LATE LEVEL MACHINES ONLY			
- 13	4240653	1	. MOTOR ASM, 110V 50-60HZ EARLY LEVEL MACHINES ONLY			
- 13	4240655	1	. MOTOR ASM, 220V 50-60HZ EARLY LEVEL MACHINES ONLY			
- 13	4240677	1	. MOTOR ASM, 110V 50-60HZ LATE LEVEL MACHINES ONLY			
- 13	4240679	1	. MOTOR ASM, 220V 50-60HZ LATE LEVEL MACHINES ONLY			
- 14	1621192	2	. SCREW, MACH-PAN HD M4 X 12MM LG LATE LEVEL MACHINES ONLY			
- 14A	1621192	4	. SCREW, MACH-PAN HD M4 X 12MM LG EARLY LEVEL MACHINES ONLY			
- 15	22478	2	. WASHER, FLAT 0.170 ID X 3/8 OD X 1/32 THK LATE LEVEL MACHINES ONLY			
- 15A	22478	4	. WASHER, FLAT 0.170 ID X 3/8 OD X 1/32 THK EARLY LEVEL MACHINES ONLY			
- 16	4240681	1	. CAPACITOR ASM			
- 17	2462685	1	. SCREW, THD FORM M4 X 10MM LG			
- 18	35229	1	. WASHER, 11/64 ID X 7/16 OD			
- 19	526378	2	. COVER			
- 20	2596291	1	. CLAMP			

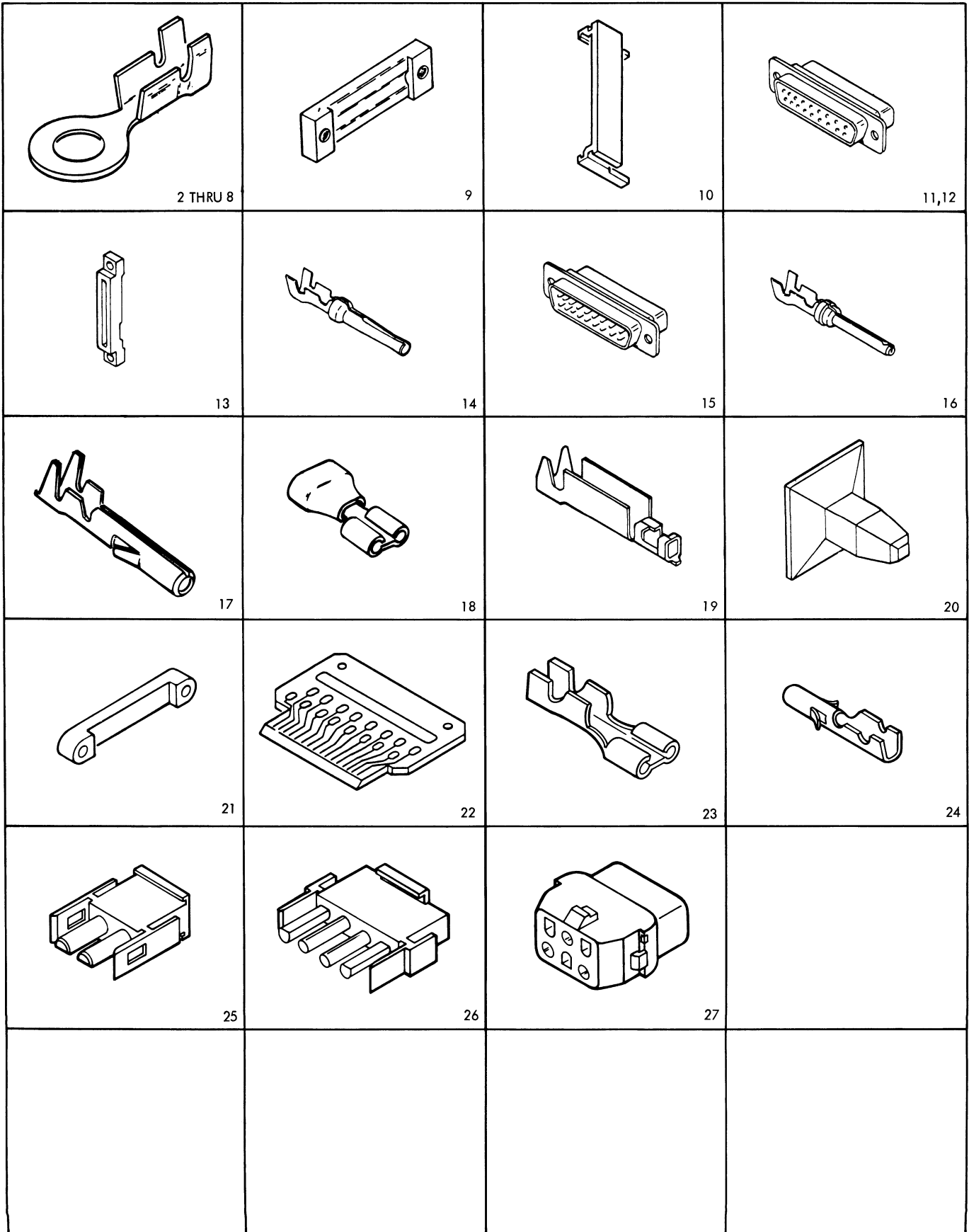


FIGURE 10. CABLE ASSEMBLIES WITH COMPONENT PARTS. SEE LIST 10.

FIGURE- INDEX NUMBER	PART NUMBER	UNITS PER ASM.	DESCRIPTION			
			1	2	3	4
10 -	NO NO.	REF	CABLE ASSEMBLIES WITH COMPONENT PARTS			
- 1	1608274		LINE CORD BRAZIL, CANADA, JAPAN, MEXICO, VENEZUELA, AND U.S.			
- 1	2451101		LINE CORD AUSTRIA, DENMARK, FINLAND, GERMANY, NETHERLANDS, NOEWAY, SPAIN, AND SWEDEN			
- 1	2451102		LINE CORD AUSTRALIA			
- 1	2451105		LINE CORD U.K.			
- 1	2451111		LINE CORD BELGIUM, FRANCE, AND ITALY			
- 1	2451113		LINE CORD SWITZERLAND			
- 1	6842844		CABLE ASM, BSCA INTERNAL FOR COMPONENT PARTS SEE INDEX NOS. 4, 9, 15, 16, 22			
- 1	6822845		CABLE ASM, SERIAL I/O INTERNAL FOR COMPONENT PARTS SEE INDEX NOS. 4, 9, 12, 14, 22			
- 1	6842846		CABLE ASM, TP INTERNAL FOR COMPONENT PARTS SEE INDEX NOS. 4, 9, 15, 16, 22			
- 1	6842847		CABLE ASM, SERIAL I/O & COMM. INTERNAL FOR COMPONENT PARTS SEE INDEX NOS. 5, 12, 13, 14, 15, 16, 22			
- 1	6842851		CABLE ASM FOR COMPONENT PARTS SEE INDEX NOS. 19, 20, 24, 26, 28			
- 1	6842880		CABLE ASM, MONITOR			
- 1	6842881		CABLE ASM, KEYBOARD			
- 1	6842890		CABLE ASM, DC TO 01B BOARD FOR COMPONENT PARTS SEE INDEX NOS. 2, 10, 11, 14, 18, 21, 22			
- 1	6842892		CABLE ASM, AC TO HIGH FREQ. FOR COMPONENT PARTS SEE INDEX NOS. 3, 5, 7, 8			
- 1	6842898		CABLE ASM, DRIVER			
- 1	6842899		CABLE ASM, DRIVER			
- 1	6842900		CABLE ASM, AC TO DISKETTE DRIVES FOR COMPONENT PARTS SEE INDEX NOS. 6, 17, 27			
- 1	6842915		CABLE ASM, AC TO DISKETTE DRIVES FOR COMPONENT PARTS SEE INDEX NOS. 6, 17, 27			
- 1	6842916		CABLE ASM, AC TO TOP FAN FOR COMPONENT PARTS SEE INDEX NOS. 5, 7, 8, 17, 25			
- 1	6842917		CABLE ASM, AC TO LOWER FAN FOR COMPONENT PARTS SEE INDEX NOS. 5, 7, 17, 25			
- 1	6842933		CABLE ASM, RECEPTACLE CONN.			
- 1	6842934		CABLE ASM, RECEPTACLE CONN.			
- 1	6842981		CABLE ASM, PRIME DC POWER FOR COMPONENT PARTS SEE INDEX NOS. 2, 5, 7, 23			
- 2	236915	AR	. TERMINAL, CONTACT FEMALE 18-20AWG			
- 3	43C798	AR	. TERMINAL, SLIP CN 20-18 AWG			
- 4	483676	AR	. TERMINAL, RING NO. 6 STUD 22-26AWG			
- 5	483677	AR	. TERMINAL, RING NO. 6 STUD 18-20AWG			
- 6	483678	AR	. TERMINAL, RING NO 6 STUD 14-16AWG			
- 7	483681	AR	. TERMINAL, RING			
- 8	483682	AR	. TERMINAL, RING NO. 8 STUD 14-16AWG			
- 9	652651	AR	. STRAIN RELIEF			
- 10	811802	AR	. GUIDE, CARD-6 PAC			
- 11	1608648	AR	. CONNECTOR, 15 POS RECEPTACLE			
- 12	1655336	AR	. CONNECTOR			
- 13	1608761	AR	. STRAIN RELIEF			
- 14	1655337	AR	. SOCKET CONTACT 20-24 AWG			
- 15	1655338	AR	. PLUG			
- 16	1655339	AR	. PIN CONTACT 20-24 AWG			
- 17	1847523	AR	. TERMINAL FIN			
- 18	2310984	AR	. TERMINAL			

FIGURE- INDEX NUMBER	PART NUMBER	UNITS PER ASM.	DESCRIPTION			
			1	2	3	4
10 - 19	2637682	AR	.	PIN, CONTACT	22-26	AWG
- 20	2637689	AR	.	INSERT, PLASTIC		
- 21	5353922	AR	.	STRAIN RELIEF		
- 22	5800634	AR	.	CARD ASM		
- 23	523267	AR	.	TERMINAL, SLIP-ON		
- 24	1661132	AR	.	TERMINAL		
- 25	1847524	AR	.	PLUG, 2 CIRCUIT		
- 26	1847528	AR	.	HOUSING		
- 27	1847531	AR	.	HOUSING		
- 28	8324648	AR	.	HOUSING		
- 29	819408	AR	.	CARD HOLDER		

5110 MODEL 3

PART NO.	LIST AND INDEX NO.	PART NO.	LIST AND INDEX NO.	PART NO.	LIST AND INDEX NO.	PART NO.	LIST AND INDEX NO.
22478	9 - 15	1621192-CONT	9 - 14	2451224-CONT	2 - 25	5130688	4 - 5
	9 - 15	1621193	4 - 7		2 - 49	5145492	4 - 2
35229	8 - 22		8 - 17		2 - 67	5183361	5 - 9
	9 - 18	1621194	9 - 10		2 - 69	5183362	5 - 10
49374	7 - 3	1621197	2 - 52		2 - 71	5188694	1 - 22
	8 - 12		3 - 13		2 - 75		5 - REF
124943	1 - 15		4 - 11	2462066	2 - 29	5188695	1 - 22
138747	2 - 37		6 - 9	2462574	8 - 14		5 - REF
138755	1 - 31	1621309	6 - 6	2462685	7 - 10	5188696	1 - 22
236550	2 - 16	1621327	7 - 5		8 - 21		5 - REF
236915	10 - 2	1621509	1 - 8		9 - 2	5192703	1 - 22
430796	10 - 3	1621672	8 - 2		9 - 17		5 - REF
438571	3 - 6		8 - 11	2462686	8 - 19	5192704	1 - 22
472729	2 - 19	1621719	9 - 12		9 - 4		5 - REF
483676	10 - 4	1621811	2 - 35	2546641	3 - 8	5192705	1 - 22
483677	10 - 5	1622302	7 - 13	2596291	9 - 20		5 - REF
483678	10 - 6	1622304	1 - 36	2637682	10 - 19	5240461	2 - 46
483681	10 - 7		2 - 36	2637689	10 - 20	5319854	2 - 33
483682	10 - 8	1622334	3 - 7	4240512	6 - 10		2 - 41
523267	10 - 23		4 - 4	4240513	6 - 10	5353922	10 - 21
526378	9 - 19	1622346	2 - 53	4240516	6 - 10	5552875	2 - 22
652651	10 - 9		3 - 14	4240551	7 - 24	5562019	7 - 23
726561	1 - 25		4 - 12	4240552	7 - 7		8 - 20
811802	10 - 10	1622402	6 - 15	4240555	7 - 6	5562071	7 - 2
813179	3 - 11		8 - 5	4240556	7 - 4	5562398	1 - 13
819408	10 - 29	1622403	1 - 34	4240557	7 - 1	5640730	1 - 11
845762	1 - 32		4 - 3	4240573	7 - 14	5800634	10 - 22
848865	2 - 2	1643292	5 - 7	4240576	8 - 18	5892077	1 - 13
855252	2 - 58	1643293	5 - 11	4240580	8 - 10	6812822	1 - 32
	2 - 60	1643294	5 - 2	4240583	8 - 13	6812823	1 - 32
855253	2 - 59	1643297	5 - 17	4240584	9 - 5	6812824	1 - 32
855264	1 - 41	1643298	5 - 4	4240585	6 - 11	6812825	1 - 32
855265	1 - 41	1655336	10 - 12	4240586	6 - 12	6812826	1 - 32
984117	1 - 13	1655337	10 - 14	4240587	9 - 11	6822845	10 - 1
984122	1 - 15	1655338	10 - 15	4240588	9 - 11	6825818	1 - 31
984123	1 - 31	1655339	10 - 16	4240589	8 - 8	6825819	1 - 31
1138167	1 - 37	1661132	10 - 24	4240592	8 - 3	6825820	1 - 31
1589131	2 - 14	1748131	5 - 16	4240593	7 - 9	6825821	1 - 31
1608274	2 - 43A	1786825	5 - 15	4240594	7 - 21	6825828	1 - 31
	10 - 1	1821987	1 - 30A	4240596	7 - 18	6825840	1 - 31
1608428	1 - 18	1821998	1 - 30	4240599	7 - 20	6825864	1 - 32
1608441	2 - 76	1847523	10 - 17	4240600	7 - 15	6825868	1 - 32
1608648	10 - 11	1847524	10 - 25	4240601	7 - 17	6838288	2 - 74
1608685	2 - 18	1847528	10 - 26	4240604	9 - 7	6838289	6 - 7
1608686	2 - 15	1847531	10 - 27	4240605	9 - 7	6840705	2 - 66
1608761	10 - 13	1864454	5 - 8	4240610	9 - 8	6841457	4 - 8
1608879	2 - 28	1864481	5 - 5	4240614	8 - 7	6841458	4 - 9
1608899	2 - 27	1864482	5 - 6	4240620	7 - 11	6841964	2 - 76
1621000	2 - 9	1864483	5 - 12	4240631	8 - 9	6842740	1 - 21
	2 - 11	1864484	5 - 13	4240632	8 - 15	6842744	1 - 21
	2 - 13	1864995	5 - 1	4240638	9 - 3	6842797	1 - 21
1621023	3 - 10	1864996	5 - 1	4240642	7 - 25	6842822	1 - 21
1621061	2 - 39	1865335	5 - 14	4240644	8 - 6	6842823	1 - 21
1621063	1 - 35	1865347	5 - 3	4240653	9 - 13	6842844	10 - 1
162117C	1 - 24	1865348	5 - 1	4240655	9 - 13	6842846	10 - 1
	2 - 47	1865349	5 - 18	4240661	8 - 1	6842847	10 - 1
	3 - 2	2305493	7 - 22	4240663	8 - 16	6842851	6 - 4
	7 - 12	2310984	10 - 18	4240666	9 - 1		10 - 1
	7 - 16	2397045	2 - 17	4240671	9 - 9	6842855	1 - 3
	7 - 19	2451101	2 - 43A	4240673	9 - 11	6842857	1 - 1
1621176	2 - 43		10 - 1	4240675	9 - 11	6842859	1 - 19
	2 - 45	2451102	2 - 43A	4240677	9 - 13	6842863	2 - 21
1621182	6 - 14		2 - 43A	4240679	9 - 13	6842865	4 - 10
	8 - 4		10 - 1	4240681	9 - 16	6842866	2 - 32
1621190	1 - 28	2451105	2 - 43A	4360100	3 - 9		4 - REF
	1 - 30		2 - 43A	4360110	4 - 6	6842868	2 - 62
	2 - 51		10 - 1	4360147	4 - 1	6842869	6 - 8
	2 - 56	2451111	2 - 43A	4406240	1 - 13	6842870	2 - 64
	2 - 63		2 - 43A	4406241	1 - 13	6842873	2 - 68
	2 - 73		10 - 1	4406242	1 - 13	6842874	2 - 70
	3 - 4	2451113	2 - 43A	4406243	1 - 13	6842875	2 - 61
	6 - 2		2 - 43A	4406244	1 - 13	6842876	2 - 5
	7 - 8		10 - 1	4836797	1 - 39	6842877	2 - 7
1621192	9 - 14	2451224	2 - 6	4836798	2 - 30	6842878	2 - 34

5110 MODEL 3

PART NO.	LIST AND INDEX NO.	PART NO.	LIST AND INDEX NO.	PART NO.	LIST AND INDEX NO.	PART NO.	LIST AND INDEX NO.
6842879	3 - 12	8324648	10 - 28				
6842880	10 - 1	8326722	1 - 15				
6842881	10 - 1	8326797	1 - 15				
6842882	1 - 27	8326798	1 - 15				
	2 - 72	8326800	1 - 15				
	3 - REF	8326801	1 - 15				
6842883	2 - 65	8326802	1 - 15				
6842884	1 - 23	8542861	1 - 22				
6842886	3 - 3		5 - REF				
6842888	2 - 1	8542862	1 - 22				
6842885	6 - 1		5 - REF				
6842890	10 - 1	8542863	1 - 22				
6842892	10 - 1		5 - REF				
6842893	3 - 1	8551898	1 - 25				
6842895	1 - 16	8551903	1 - 31				
6842896	1 - 17	8551904	1 - 15				
6842897	1 - 14	8551906	1 - 25				
6842898	10 - 1	8551907	1 - 32				
6842899	10 - 1	8551934	1 - 25				
6842900	10 - 1	8551951	1 - 13				
6842903	2 - 55	8892170	1 - 2				
6842908	6 - 13		1 - 4				
6842912	2 - 34	9395349	1 - 20				
6842914	2 - 48						
6842915	10 - 1						
6842916	10 - 1						
6842917	10 - 1						
6842933	2 - 42						
	10 - 1						
6842934	2 - 44						
	10 - 1						
6842937	2 - 8						
	2 - 12						
6842938	2 - 10						
6842942	2 - 38						
6842945	2 - 3						
6842947	2 - 3						
6842949	2 - 3						
6842951	2 - 3						
6842953	2 - 3						
6842955	2 - 3						
6842957	2 - 3						
6842959	2 - 3						
6842961	2 - 3						
6842963	2 - 3						
6842965	2 - 3						
6842967	2 - 3						
6842969	2 - 26						
6842972	3 - 5						
6842974	2 - 55						
6842976	2 - 55						
6842978	2 - 55						
6842979	2 - 24						
6842981	10 - 1						
6842982	2 - 40						
6842984	2 - 57						
6842987	2 - 20						
6842989	2 - 55						
6843260	6 - 5						
6843694	6 - 16						
6843697	1 - 5						
6843708	1 - 40						
6843714	1 - 33						
6843716	2 - 31						
6843717	1 - 6						
6843719	2 - 23						
6843720	2 - 54						
6843721	6 - 3						
7364698	2 - 4						
7389292	1 - 25						
7389307	1 - 25						
7389309	1 - 25						
7389311	1 - 25						
7389959	1 - 25						

READER'S COMMENT FORM

S134-0054-0

IBM 5110 Model 3 Computer Parts Catalog

Your comments assist us in improving the usefulness of our publications; they are an important part of the input used in preparing updates to the publications. IBM may use and distribute any of the information you supply in any way it believes appropriate without incurring any obligation whatever. You may, of course, continue to use the information you supply.

Please do not use this form for technical questions about the system or for requests for additional publications; this only delays the response. Instead, direct your inquiries or requests to your IBM representative or the IBM branch office serving your locality.

Corrections or clarifications needed:

Page	Comment
------	---------

Cut or Fold Along Line

Please indicate your name and address in the space below if you wish a reply.

Thank you for your cooperation. No postage stamp necessary if mailed in the U.S.A.
(Elsewhere, an IBM office or representative will be happy to forward your comments.)

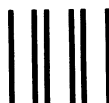
Reader's Comment Form

Cut Along Line

Fold and tape

Please Do Not Staple

Fold and tape



NO POSTAGE
NECESSARY
IF MAILED
IN THE
UNITED STATES

BUSINESS REPLY MAIL
FIRST CLASS PERMIT NO. 40 ARMONK, NEW YORK
POSTAGE WILL BE PAID BY ADDRESSEE



IBM Corporation
Systems Publications, Dept 27T
P.O. Box 1328
Boca Raton, Florida 33432

Fold and tape

Please Do Not Staple

Fold and tape



International Business Machines Corporation
General Systems Division
4111 Northside Parkway N.W.
P.O. Box 2150, Atlanta, Georgia 30301
(U.S.A. only)

General Business Group/International
44 South Broadway
White Plains, New York 10601
(International)

S134-0054-0
Printed in U.S.A.

READER'S COMMENT FORM

S134-0054-0

IBM 5110 Model 3 Computer Parts Catalog

Your comments assist us in improving the usefulness of our publications; they are an important part of the input used in preparing updates to the publications. IBM may use and distribute any of the information you supply in any way it believes appropriate without incurring any obligation whatever. You may, of course, continue to use the information you supply.

Please do not use this form for technical questions about the system or for requests for additional publications; this only delays the response. Instead, direct your inquiries or requests to your IBM representative or the IBM branch office serving your locality.

Corrections or clarifications needed:

Page	Comment
------	---------

Cut or Fold Along Line

Please indicate your name and address in the space below if you wish a reply.

Thank you for your cooperation. No postage stamp necessary if mailed in the U.S.A.
(Elsewhere, an IBM office or representative will be happy to forward your comments.)

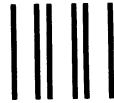
Reader's Comment Form

Cut Along Line

Fold and tape

Please Do Not Staple

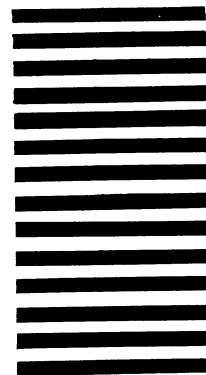
Fold and tape



NO POSTAGE
NECESSARY
IF MAILED
IN THE
UNITED STATES

BUSINESS REPLY MAIL

FIRST CLASS PERMIT NO. 40 ARMONK, NEW YORK
POSTAGE WILL BE PAID BY ADDRESSEE



IBM Corporation
Systems Publications, Dept 27T
P.O. Box 1328
Boca Raton, Florida 33432

Fold and tape

Please Do Not Staple

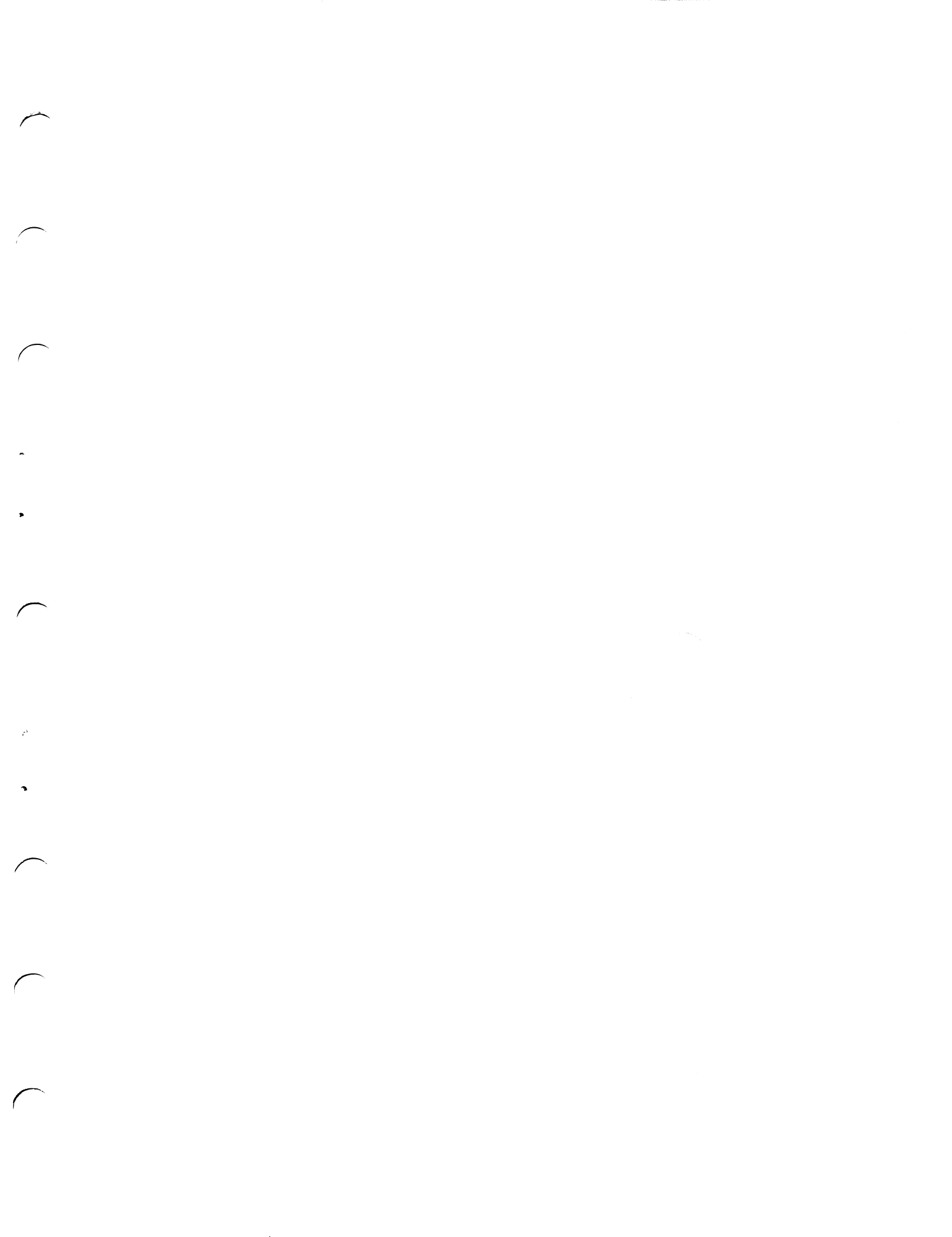
Fold and tape



International Business Machines Corporation
General Systems Division
4111 Northside Parkway N.W.
P.O. Box 2150, Atlanta, Georgia 30301
(U.S.A. only)

General Business Group/International
44 South Broadway
White Plains, New York 10601
(International)

S134-0054-0
Printed in U.S.A.





International Business Machines Corporation

**General Systems Division
4111 Northside Parkway N.W.
P.O. Box 2150
Atlanta, Georgia 30301
(U.S.A. only)**

**General Business Group/International
44 South Broadway
White Plains, New York 10601
U.S.A.
(International)**

IBM 5110 Model 3 Computer Parts Catalog Printed in U.S.A. S134-0054-0